

## Product datasheet for **TA306146**

### ACE2 Rabbit Polyclonal Antibody (Angiotensin Converting Enzyme 2)

#### Product data:

Product Type:	Primary Antibodies
Applications:	IF, IHC, WB
Recommended Dilution:	WB: 0.5 - 2 ug/mL, ICC: 2 ug/mL, IF: 20 ug/mL
Reactivity:	Human, Mouse
Host:	Rabbit
Isotype:	IgG
Clonality:	Polyclonal
Immunogen:	ACE2 antibody was raised against a synthetic peptide corresponding to amino acids near the center of human ACE2.
Formulation:	PBS containing 0.02% sodium azide.
Concentration:	1ug/ul
Purification:	Affinity chromatography purified via peptide column
Conjugation:	Unconjugated
Storage:	Store at -20°C as received.
Stability:	Stable for 12 months from date of receipt.
Gene Name:	angiotensin I converting enzyme 2
Database Link:	<a href="#">NP_068576</a> <a href="#">Entrez Gene 70008 Mouse</a> <a href="#">Entrez Gene 59272 Human</a> <a href="#">Q9BYF1</a>
Background:	Angiotensin-converting enzyme 2 (ACE2) plays a central role in vascular, renal, and myocardial physiology (1-2). In contrast to its homolog ACE, ACE2 expression is restricted to heart, kidney, and testis. Recently, ACE2 has also been shown to be a functional receptor of the SARS coronavirus (3). The normal function of ACE2 is to convert the inactive vasoconstrictor angiotensin I (AngI) to Ang1-9 and the active form AngII to Ang1-7, unlike ACE, which converts AngI to AngII. While the role of these vasoactive peptides is not well understood, lack of ACE2 expression in ace2-/ace2- mice leads to severely reduced cardiac contractility, indicating its importance in regulating heart function (4).
Synonyms:	ACEH

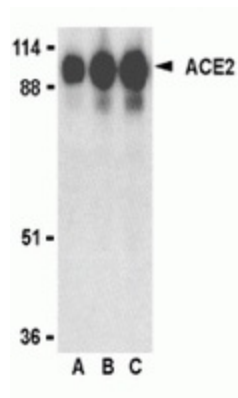


[View online »](#)

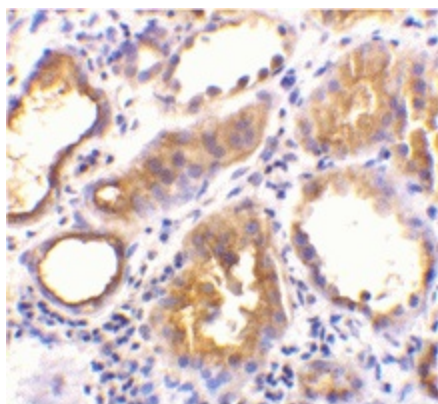
Protein Families: Druggable Genome, Secreted Protein, Transmembrane

Protein Pathways: Renin-angiotensin system

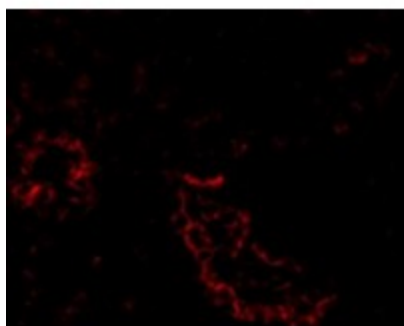
### Product images:



Western blot analysis of ACE2 in human kidney lysate with ACE2 antibody at (A) 0.5, (B) 1 and (C) 2 ug/ml.



Immunohistochemical staining of human kidney tissue using ACE2 antibody at 2 ug/ml.



Immunofluorescence of ACE2 in Human Kidney cells with ACE2 antibody at 20 ug/mL.