

Product datasheet for **TA306143**

ALS2CR2 (STRADB) Rabbit Polyclonal Antibody

Product data:

Product Type:	Primary Antibodies
Applications:	IHC, WB
Recommended Dilution:	WB: 0.5 - 2 ug/mL, ICC: 5 ug/mL
Reactivity:	Human
Host:	Rabbit
Isotype:	IgG
Clonality:	Polyclonal
Immunogen:	ILPIP antibody was raised against a synthetic peptide corresponding to amino acids at the C-terminus of human ILPIP.
Formulation:	PBS containing 0.02% sodium azide.
Concentration:	1ug/ul
Purification:	Affinity chromatography purified via peptide column
Conjugation:	Unconjugated
Storage:	Store at -20°C as received.
Stability:	Stable for 12 months from date of receipt.
Gene Name:	STE20-related kinase adaptor beta
Database Link:	NP_061041 Entrez Gene 55437 Human Q9C0K7
Background:	ILPIP (ILP-interacting protein) has recently been shown to interact with XIAP, a member of the IAP (Inhibitor of Apoptosis) protein family (1). Together, these two proteins synergistically activate the TAK1/JNK1 signal transduction pathway, which acts to protect against the interleukin-1 β converting enzyme of Fas-induced apoptosis (1,2). This protein was independently isolated and characterized as polyploidy-associated protein kinase (PAPK), a member of the Ste20/germinal center kinase family that modulates cytoskeletal organization and cell survival (3), suggesting that its protective role may be a function of its kinase activity. Although two mRNA sequences have been isolated, only the shorter isoform has been observed.

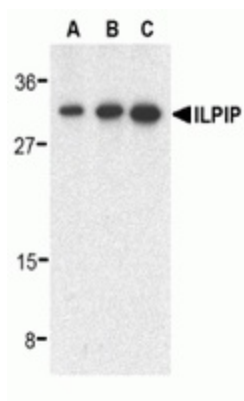


[View online »](#)

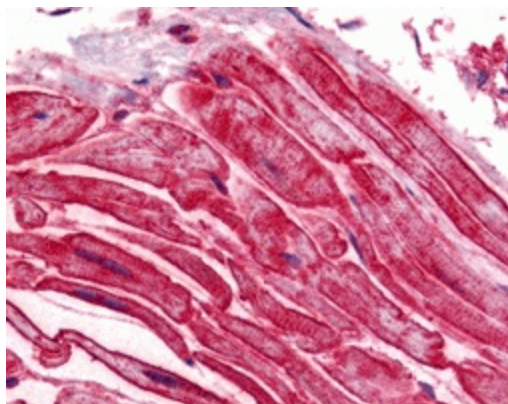
Synonyms: ALS2CR2; CALS-21; ILPIP; ILPIPA; PAK; PRO1038

Protein Families: Druggable Genome, Protein Kinase

Product images:



Western blot analysis of ILPIP in human heart lysate with ILPIP antibody at 0.5 (lane A), 1 (lane B), and 2 (lane C) ug/ml, respectively.



Immunohistochemistry of ILPIP in human heart tissue with ILPIP antibody at 5 ug/ml.