

Product datasheet for **TA306140**

Casp12 Rabbit Polyclonal Antibody

Product data:

Product Type:	Primary Antibodies
Applications:	IF, IHC, WB
Recommended Dilution:	WB: 0.5 - 2 ug/mL, ICC: 2 ug/mL, IF: 10 ug/mL
Reactivity:	Human, Mouse, Rat
Host:	Rabbit
Isotype:	IgG
Clonality:	Polyclonal
Immunogen:	Caspase-12 antibody was raised against a synthetic peptide corresponding to amino acids within the large cleavage product of murine caspase-12.
Formulation:	PBS containing 0.02% sodium azide.
Concentration:	1ug/ul
Purification:	Affinity chromatography purified via peptide column
Conjugation:	Unconjugated
Storage:	Store at -20°C as received.
Stability:	Stable for 12 months from date of receipt.
Gene Name:	caspase 12
Database Link:	CAA73532 Entrez Gene 12364 Mouse O08736



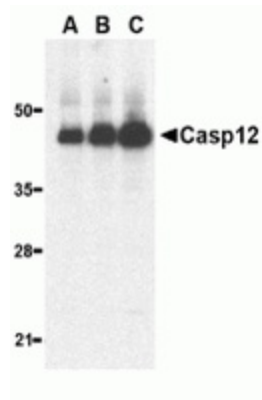
[View online »](#)

Background:

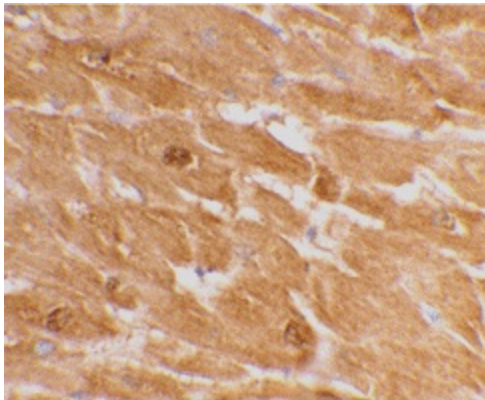
Three distinct signaling pathways lead to programmed cell death (apoptosis). The death receptor and mitochondrion pathways are the main, in which the key apoptotic proteases caspase-8 and caspase-9, respectively, are involved. The endoplasmic reticulum (ER) stress is the third apoptotic pathway and caspase-12 is involved (1,2). Caspase-12 is localized to the ER but not to cytoplasm or mitochondrion. Caspase-12 is activated by ER stress, including disruption of ER calcium homeostasis, and mediates ER stress-induced apoptosis. Caspase-12 is co-localized to the ER with several proteins that are involved in Alzheimer's disease including γ -secretase presenilin and beta-amyloid precursor protein (APP). Caspase-12 mediates cytotoxicity induced by amyloid-beta. Caspase-12 is ubiquitously expressed in mouse tissues (1).

Synonyms:

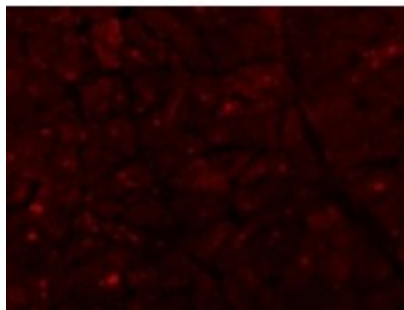
CASP-12; CASP12P1

Product images:

Western blot analysis of caspase-12 in human heart lysate with caspase-12 antibody (large) at 0.5 (lane A), 1 (lane B), and 2 ug/ml (lane C), respectively.



Immunohistochemical staining of human heart tissue using caspase-12 antibody at 2 ug/ml.



Immunofluorescence of Caspase-12 in Human Heart tissue with Caspase-12 antibody at 10 ug/mL.