

Product datasheet for **TA306139**

CARD11 Rabbit Polyclonal Antibody

Product data:

Product Type:	Primary Antibodies
Applications:	IF, IHC, WB
Recommended Dilution:	WB: 0.5 - 2 ug/mL, ICC: 10 ug/mL, IF: 20 ug/mL
Reactivity:	Human, Mouse
Host:	Rabbit
Isotype:	IgG
Clonality:	Polyclonal
Immunogen:	CARMA1 antibody was raised against a synthetic peptide corresponding to amino acids at the C-terminus of human CARMA1.
Formulation:	PBS containing 0.02% sodium azide.
Purification:	Affinity chromatography purified via peptide column
Conjugation:	Unconjugated
Storage:	Store at -20°C as received.
Stability:	Stable for 12 months from date of receipt.
Gene Name:	caspase recruitment domain family member 11
Database Link:	NP_115791 Entrez Gene 108723 Mouse Entrez Gene 84433 Human Q9BXL7
Background:	CARMA proteins belong to the membrane-associated guan-ylate kinase-like (MAGUK) family of proteins that can function as molecular scaffolds that assist assembly of signal transduction molecules (1). CARMA1, CARMA2, and CARMA3 share high degrees of sequence and functional homology, but their tissue-specific distribution suggests that they serve distinct biological functions in different cell types (2-4). Both CARMA1 and CARMA3 associate with NEMO, the regulatory subunit of the I κ B complex, thereby regulating activation of the NF-kappaB transcription factor (5). Also, gene inactivation studies showed a complete block in T and B cell immunity as well as an impaired response to LPS, indicating that CARMA1 is a critical regulator in both the adaptive and innate immune systems (6).
Synonyms:	BENTA; BIMP3; CARMA1; IMD11; PPBL

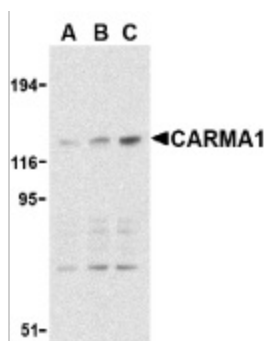


[View online »](#)

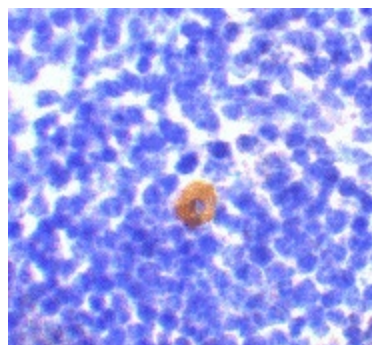
Protein Families: Druggable Genome

Protein Pathways: B cell receptor signaling pathway, T cell receptor signaling pathway

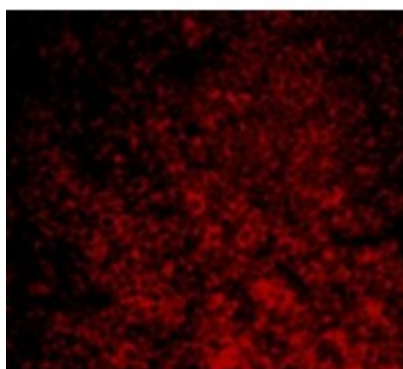
Product images:



Western blot analysis of CARMA1 expression in mouse thymus cell lysate with CARMA1 antibody at 0.5 (lane A), 1 (lane B), and 2 ug/ml (lane C), respectively.



Immunohistochemistry of CARMA1 in mouse thymus with CARMA1 antibody at 10 ug/ml.



Immunofluorescence of CARMA1 in Mouse Spleen cells with CARMA1 antibody at 20 ug/mL.