

Product datasheet for **TA306134**

BCL2L10 Rabbit Polyclonal Antibody

Product data:

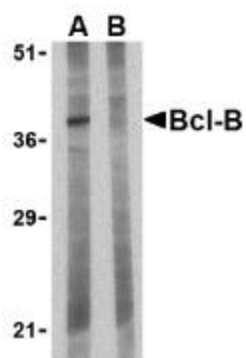
Product Type:	Primary Antibodies
Applications:	IF, WB
Recommended Dilution:	WB: 1 ug/mL, ICC: 10 ug/mL
Reactivity:	Human
Host:	Rabbit
Isotype:	IgG
Clonality:	Polyclonal
Immunogen:	Bcl-B antibody was raised against a 16 amino acid peptide from near the amino terminus of human Bcl-B.
Formulation:	PBS containing 0.02% sodium azide.
Concentration:	1ug/ul
Purification:	Affinity chromatography purified via peptide column
Conjugation:	Unconjugated
Storage:	Store at -20°C as received.
Stability:	Stable for 12 months from date of receipt.
Gene Name:	BCL2 like 10
Database Link:	NP_065129 Entrez Gene 10017 Human Q9HD36
Background:	Members in the Bcl-2 family are critical regulators of apoptosis by either inhibiting or promoting cell death. Bcl-B is a recently discovered anti-apoptotic member of the Bcl-2. Unlike the mouse homolog (also known as Diva/Boo) which is predominantly expressed in ovary and testis, the human Bcl-B protein is widely expressed. Also, the human Bcl-B functions by binding to and suppressing the apoptotic activity of Bax, whereas the mouse homolog binds Bak and also interacts with the apoptosis protein Apaf-1. Despite its predicted molecular weight, Bcl-B is often at higher molecular weights, presumably due to post-translational modifications.
Synonyms:	BCL-B; Boo; Diva



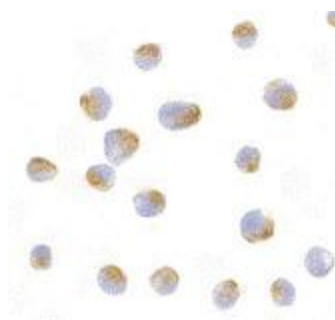
[View online »](#)

Protein Families: Druggable Genome, Transmembrane

Product images:



Western blot analysis of Bcl-B in Jurkat lysate with Bcl-B antibody at 1 ug/ml in the (A) absence and (B) presence of blocking peptide.



Immunocytochemistry of Bcl-B in Jurkat cells with Bcl-B antibody at 10 ug/mL.