

Product datasheet for **TA306106**

NALP1 (NLRP1) Rabbit Polyclonal Antibody

Product data:

Product Type:	Primary Antibodies
Applications:	IF, WB
Recommended Dilution:	WB: 1 - 4 ug/mL, ICC: 10 ug/mL, IF: 20 ug/mL
Reactivity:	Human
Host:	Rabbit
Isotype:	IgG
Clonality:	Polyclonal
Immunogen:	NALP1 antibody was raised against a peptide corresponding to 13 amino acids near the carboxy-terminus of human NALP1.
Formulation:	PBS containing 0.02% sodium azide.
Concentration:	1ug/ul
Purification:	Immunoaffinity chromatography purified IgG
Conjugation:	Unconjugated
Storage:	Store at -20°C as received.
Stability:	Stable for 12 months from date of receipt.
Gene Name:	NLR family, pyrin domain containing 1
Database Link:	AAG30288 Entrez Gene 22861 Human Q9C000



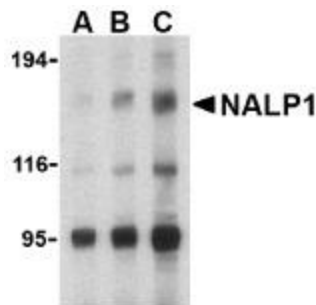
[View online »](#)

Background:

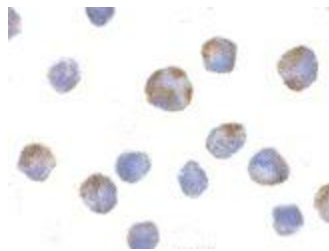
NALP1 belongs to a family of cytoplasmic proteins that have been implicated in cell responses to apoptotic and inflammatory stimuli (1). It contains a caspase recruitment domain (CARD) in addition to a NACHT domain and leucine rich repeat (LRR). This protein interacts strongly with caspase 2 and weakly with caspase 9, as well as with Apaf-1 (2). Transient overexpression of this gene in cultured cells was sufficient to induce apoptosis (3). NALP1 mRNA and protein expression levels in myeloid leukemia cells are increased following CREB (cAMP-response element binding protein) activation, suggesting that NALP1 may contribute to modulate the response of these cells to pro-inflammatory stimuli (4). Multiple alternatively spliced transcript variants encoding distinct isoforms have been found for NALP1 (3).

Synonyms:

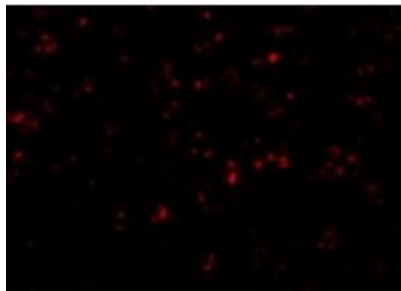
CARD7; CIDED; CLR17.1; DEFCAP; DEFCAP-L; NAC; NALP1; PP1044; S; SLEV1; VAMAS1

Product images:


Western blot analysis of NALP1 in U937 cell lysate with NALP1 antibody at (A) 1, (B) 2 and (C) 4 ug/mL.



Immunocytochemistry of NALP1 in K562 cells with NALP1 antibody at 10 ug/mL.



Immunofluorescence of NALP1 in K562 cells with NALP1 antibody at 20 ug/mL.