

## Product datasheet for **TA306104**

### BMF Rabbit Polyclonal Antibody

#### Product data:

Product Type:	Primary Antibodies
Applications:	IF, WB
Recommended Dilution:	WB: 2 ug/mL, ICC: 10 ug/mL
Reactivity:	Human, Mouse
Host:	Rabbit
Isotype:	IgG
Clonality:	Polyclonal
Immunogen:	BMF antibody was raised with a synthetic peptide corresponding to 15 amino acids near the amino terminus of human BMF.
Formulation:	PBS containing 0.02% sodium azide.
Purification:	Affinity chromatography purified via peptide column
Conjugation:	Unconjugated
Storage:	Store at -20°C as received.
Stability:	Stable for 12 months from date of receipt.
Gene Name:	Bcl2 modifying factor
Database Link:	<a href="#">NP_277038</a> <a href="#">Entrez Gene 90427 Human</a> <a href="#">Q96LC9</a>

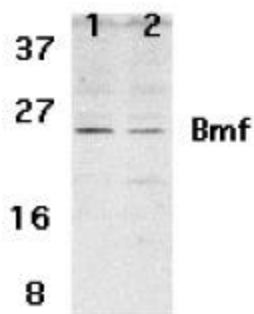
**Background:** Apoptosis is related to many diseases and development. Members in the Bcl-2 family are critical regulators of apoptosis by either inhibiting or promoting cell death. Bcl-2 homology 3 (BH3) domain is a potent death domain. BH3-only proteins, including Bad, Bid, Bik, Hrk, Bim, Noxa, and PUMA, form a growing subclass of the Bcl-2 family. A novel BH3-only protein was recently identified in human and mouse and designated Bmf (for Bcl-2-modifying factor) (1). The BH3 domain in Bmf is required both for binding to Bcl-2 proteins and for triggering apoptosis. In healthy cells, Bmf associates with the dynein light chain 2 (DLC2) component of the myosin V motors and is sequestered by the cell's actin cytoskeleton. Disruption of the actin cytoskeleton, either by depolymerization of actin filaments or by detachment of cells from the extracellular matrix, triggers release and activation of Bmf, initiating the downstream apoptotic program (1,2). Bmf is constitutively expressed in many tissues (1,2).



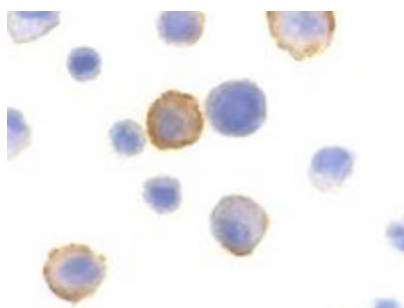
[View online »](#)

Synonyms: FLJ00065

### Product images:



Western blot analysis of Bmf expression in human HepG2 (lane 1) and 293 (lane 2) cell lysates with Bmf antibody at 2 ug /ml.



Immunocytochemistry of Bmf in HeLa cells with Bmf antibody at 10 ug/mL.