

Product datasheet for **TA306102**

NALP2 (NLRP2) Rabbit Polyclonal Antibody

Product data:

Product Type:	Primary Antibodies
Applications:	WB
Recommended Dilution:	WB: 1 - 2 ug/mL
Reactivity:	Human, Mouse, Rat
Host:	Rabbit
Isotype:	IgG
Clonality:	Polyclonal
Immunogen:	NALP2 antibody was raised against a peptide corresponding to 12 amino acids near the carboxy-terminus of human NALP2.
Formulation:	PBS containing 0.02% sodium azide.
Concentration:	1ug/ul
Purification:	Immunoaffinity chromatography purified IgG
Conjugation:	Unconjugated
Storage:	Store at -20°C as received.
Stability:	Stable for 12 months from date of receipt.
Gene Name:	NLR family, pyrin domain containing 2
Database Link:	NP_060322 Entrez Gene 232827 Mouse Entrez Gene 684545 Rat Entrez Gene 55655 Human Q9NX02



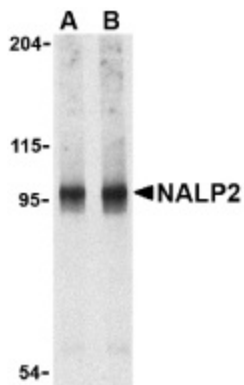
[View online »](#)

Background:

NALP2 belongs to a family of cytoplasmic proteins that have been implicated in cell responses to apoptotic and inflammatory stimuli (1). Unlike the prototypical NALP protein NALP1, NALP2 only contains a NACHT domain, leucine rich repeat (LRR), and pyrin-containing domain (PYD) (2). This protein interacts with the adapter protein ASC in addition to CARD8 and caspase-1 to form an inflammasome with high proIL-1 β -processing activity and is thought to function as a modulator of NF- κ B and procaspase-1 activation in macrophages (2,3). It has also been suggested that NALP2, in addition to other NALP family members, can act as innate sensors of pathogens in a manner similar to the toll-like receptors (TLRs) (4). At least two alternatively spliced transcript variants encoding distinct isoforms have been found for NALP2.

Synonyms:

CLR19.9; NALP2; NBS1; PAN1; PYPAF2

Product images:

Western blot analysis of NALP2 in PC-3 cell lysate with NALP2 antibody at (A) 1 and (B) 2 μ g/ml.