

Product datasheet for **TA306098**

KLHL1 Rabbit Polyclonal Antibody

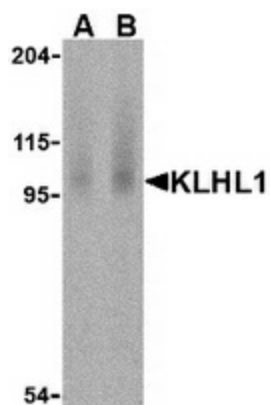
Product data:

Product Type:	Primary Antibodies
Applications:	IHC, WB
Recommended Dilution:	WB: 2 - 4 ug/mL, ICC: 10 ug/mL
Reactivity:	Human, Rat
Host:	Rabbit
Isotype:	IgG
Clonality:	Polyclonal
Immunogen:	KLHL1 antibody was raised against a 14 amino acid peptide from near the amino-terminus of human KLHL1.
Formulation:	PBS containing 0.02% sodium azide.
Concentration:	1ug/ul
Purification:	immunoaffinity purified
Conjugation:	Unconjugated
Storage:	Store at -20°C as received.
Stability:	Stable for 12 months from date of receipt.
Gene Name:	kelch like family member 1
Database Link:	AAF81719 Entrez Gene 57626 Human Q9NR64
Background:	The mammalian Kelch-like 1 (KLHL1) was initially discovered as a homolog to the Drosophila Kelch gene that is highly expressed in several brain tissues (1,2). The predicted protein domain structure of KLHL1 is characteristic of a number of proteins that bind actin, form dimers, and often act as actin-organizing proteins (3). Based on the presence of anti-sense RNA that spans the transcription and translation start sites as well as the first splice site of KLHL1 in brain tissue of individuals suffering from the neurodegenerative disorder spinocerebellar ataxia type 8 (SCA8), it has been suggested that KLHL1 is involved this disease and that regulation of KLHL1 protein may be affected by antisense RNA expression (1).
Synonyms:	MRP2

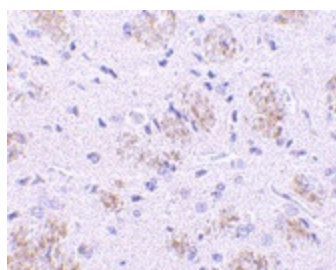


[View online »](#)

Product images:



Western blot analysis of KLHL1 in human brain cell lysate with KLHL1 antibody at (A) 2 and (B) 4 ug/ml.



Immunohistochemistry of KLHL1 in rat brain tissue with KLHL1 antibody at 10 ug/ml.