

Product datasheet for **TA306097**

CARD10 Rabbit Polyclonal Antibody

Product data:

Product Type:	Primary Antibodies
Applications:	IF, WB
Recommended Dilution:	WB: 5 - 10 ug/mL, ICC: 10 ug/mL, IF: 20 ug/mL
Reactivity:	Human, Mouse
Host:	Rabbit
Isotype:	IgG
Clonality:	Polyclonal
Immunogen:	CARD10 antibody was raised against a synthetic peptide corresponding to 14 amino acids at the C-terminus of human CARD10.
Formulation:	PBS containing 0.02% sodium azide.
Concentration:	1ug/ul
Purification:	immunoaffinity purified
Conjugation:	Unconjugated
Storage:	Store at -20°C as received.
Stability:	Stable for 12 months from date of receipt.
Gene Name:	caspase recruitment domain family member 10
Database Link:	AAK26165 Entrez Gene 29775 Human Q9BWT7



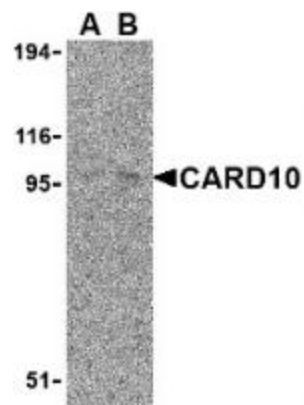
[View online »](#)

Background:

Apoptosis is related to many diseases and development. Cell death signals are transduced by death domain (DD), death effector domain (DED), and caspase recruitment domain (CARD) containing molecules. CARD containing proteins include some caspases, Apaf-1, CARD4, IAPs, RICK, ARC, RAIDD, Bcl-10, and ASC. A novel CARD-containing protein was recently identified and designated CARD10 (1). This protein belongs to the membrane-associated guanylate kinase-like (MAGUK) family of proteins that can function as molecular scaffolds that assist assembly of signal transduction molecules (2). CARD 10 interacts with Bcl-10, a Bcl protein that promotes apoptosis, caspase-9 maturation and activation of NF-kappaB (1,3). CARD 10 and the related protein CARMA1 also associate with NEMO, the regulatory subunit of the IkkappaK complex (4), demonstrating its importance in the regulation of NF-kappaB transcription factor activation.

Synonyms:

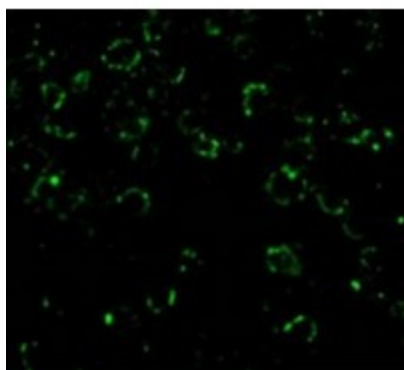
BIMP1; CARMA3

Product images:

Western blot analysis of CARD10 expression in EL4 cell lysate with CARD10 antibody at (A) 5 and (B) 10 ug/ml.



Immunocytochemistry of CARD10 in EL4 cells with CARD10 antibody at 10 ug/mL.



Immunofluorescence of CARD10 in EL4 cells with CARD10 antibody at 20 ug/mL.