

Product datasheet for **TA306095**

MAP1 (MOAP1) Rabbit Polyclonal Antibody

Product data:

Product Type:	Primary Antibodies
Applications:	WB
Recommended Dilution:	WB: 1 - 4 ug/mL
Reactivity:	Human, Mouse
Host:	Rabbit
Isotype:	IgG
Clonality:	Polyclonal
Immunogen:	MAP-1 antibody was raised against a 15 amino acid peptide from near the center of human MAP-1.
Formulation:	PBS containing 0.02% sodium azide.
Concentration:	1ug/ul
Purification:	Affinity chromatography purified via peptide column
Conjugation:	Unconjugated
Storage:	Store at -20°C as received.
Stability:	Stable for 12 months from date of receipt.
Gene Name:	modulator of apoptosis 1
Database Link:	NP_071434 Entrez Gene 64113 Mouse Entrez Gene 64112 Human Q96BY2



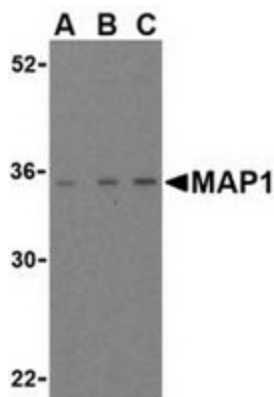
[View online »](#)

Background:

Apoptosis plays a major role in normal organism development, tissue homeostasis, and removal of damaged cells. Disruption of this process has been implicated in a variety of diseases such as cancer (reviewed in 1). Members of the Bcl-2 family are known to be critical regulators of this process. These proteins are characterized by the presence of several conserved motifs termed Bcl-2 homology (BH) domains (reviewed in 2 and 3). A related protein termed MAP-1 has recently been identified. This protein contains a BH3-like domain and induces caspase-dependent apoptosis in mammalian cells when overexpressed. It forms homodimers and associates with Bcl-2 family members such as Bax, Bcl-2, and Bcl-XL in vitro and in vivo (4). It has been suggested that MAP-1 associates with the tumor suppressor RASSF1A following death receptor activation, allowing a conformational change in Bax that leads to cellular apoptosis (5).

Synonyms:

MAP-1; PNMA4

Product images:

Western blot analysis of MAP-1 in EL4 cell lysate with MAP-1 antibody (1N) at (A) 1, (B) 2, and (C) 4 ug/ml.