

Product datasheet for **TA306092**

CARD15 (NOD2) Rabbit Polyclonal Antibody

Product data:

Product Type:	Primary Antibodies
Applications:	IF, WB
Recommended Dilution:	WB: 2 - 4 ug/mL, ICC: 10 ug/mL, IF: 20 ug/mL
Reactivity:	Human
Host:	Rabbit
Isotype:	IgG
Clonality:	Polyclonal
Immunogen:	Rabbit NOD2 polyclonal antibody was raised against a synthetic peptide corresponding to 14 amino acids at the carboxy terminus of human NOD2.
Formulation:	PBS containing 0.02% sodium azide.
Concentration:	1 mg/ml
Purification:	Immunoaffinity chromatography purified IgG
Conjugation:	Unconjugated
Storage:	Store at -20°C as received.
Stability:	Stable for 12 months from date of receipt.
Gene Name:	nucleotide binding oligomerization domain containing 2
Database Link:	NP_071445 Entrez Gene 64127 Human Q9HC29

Background: Apaf-1 and NOD1 are members of a new family (1), which are involved in the regulation of apoptosis and immune response. Each of them contains a caspase recruitment domain (CARD) and a nucleotide-binding oligomerization domain (NOD). A third member in this family was recently identified and designated NOD2 (2). NOD2 interacts with RICK via a homophilic CARD-CARD interaction. NOD2 activates NF-kappaB, which is regulated by its carboxy-terminal leucine-rich repeat domain that acts as an intracellular receptor for components of bacteria. The variants of NOD2, either a frameshift or a missense, were associated with Crohn's disease (3,4) that is a main type of chronic inflammatory bowel disease.



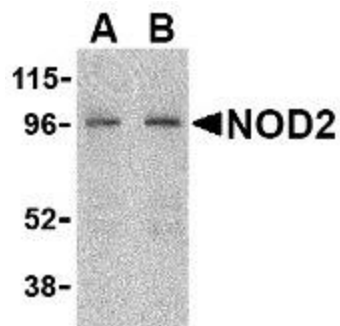
[View online »](#)

Synonyms: ACUG; BLAU; CARD15; CD; CLR16.3; IBD1; NLRC2; NOD2B; PSORAS1

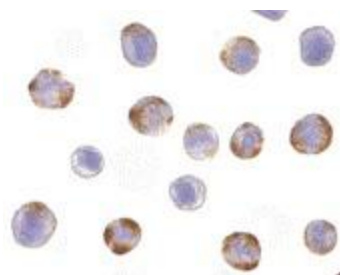
Protein Families: Druggable Genome

Protein Pathways: NOD-like receptor signaling pathway

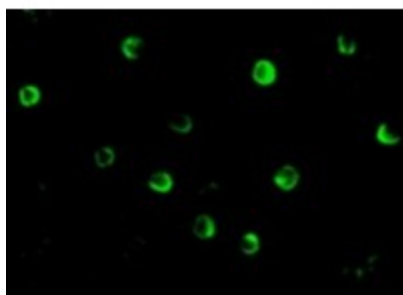
Product images:



Western blot analysis of NOD2 in HeLa cell lysate with NOD2 antibody at (A) 2 and (B) 4 ug/mL.



Immunocytochemistry of NOD2 in HeLa cells with NOD2 antibody at 10 ug/mL.



Immunofluorescence of NOD2 in HeLa cells with NOD2 antibody at 20 ug/mL.