

Product datasheet for **TA306086**

IL22RA1 Rabbit Polyclonal Antibody

Product data:

Product Type:	Primary Antibodies
Applications:	IF, WB
Recommended Dilution:	WB: 1 ug/mL, ICC: 10 ug/mL, IF: 10 ug/mL
Reactivity:	Human, Rat
Host:	Rabbit
Isotype:	IgG
Clonality:	Polyclonal
Immunogen:	IL-22 receptor antibody was raised against a synthetic peptide corresponding to amino acids near the amino terminus of human IL-22 receptor precursor .
Formulation:	PBS containing 0.02% sodium azide.
Concentration:	1 mg/ml
Purification:	Affinity chromatography purified via peptide column
Conjugation:	Unconjugated
Storage:	Store at -20°C as received.
Stability:	Stable for 12 months from date of receipt.
Gene Name:	interleukin 22 receptor subunit alpha 1
Database Link:	NP_067081 Entrez Gene 362629 Rat Entrez Gene 58985 Human Q8N6P7

Background: A novel cytokine, designated IL-TIF for IL-10 related T cell-derived inducible factor and IL-22, was recently identified (1-3). The receptor for IL-22 (IL-22R, also termed CRF2-9 and IL-TIF-R1 chain) is a new member of the class II cytokine receptor family (3,4). IL-22R forms a complex with IL-10 receptor b chain and mediates IL-22 signaling. IL-22 and its receptor activate JAK-STAT signaling pathway. IL22R is expressed in normal liver and kidney and their cell lines HepG2 and TK-10. A soluble form of IL-22 receptor, also termed IL-22 binding protein (IL-22BP) and IL-22 receptor-a 2 (IL-22RA2), was identified very recently (5-7). IL-22BP prevents binding of IL-22 to the functional cell surface IL-22R complex and neutralizes IL-22 activity. LPS induces IL-22 expression, which indicates the role of IL-22 in inflammatory response.



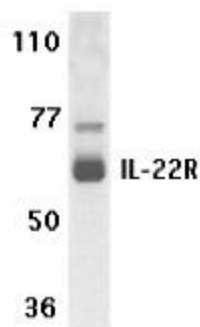
[View online »](#)

Synonyms: CRF2-9; IL22R; IL22R1

Protein Families: Druggable Genome, Transmembrane

Protein Pathways: Cytokine-cytokine receptor interaction, Jak-STAT signaling pathway

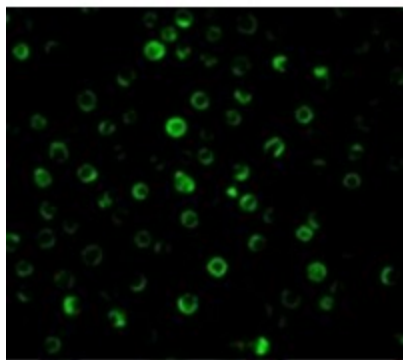
Product images:



Western blot analysis of IL-22 receptor expression in human HepG2 cell lysate with IL-22 receptor antibody at 1 ug /ml.



Immunocytochemistry of IL-22 receptor in HepG2 cells with IL-22 receptor antibody at 10 ug/mL.



Immunofluorescence of IL-22 receptor in HepG2 cells with IL-22 receptor antibody at 10 ug/mL.