

Product datasheet for **TA306083**

NKIRAS1 Rabbit Polyclonal Antibody

Product data:

Product Type:	Primary Antibodies
Applications:	IHC, WB
Recommended Dilution:	WB: 2 - 4 ug/mL, ICC: 1 ug/mL
Reactivity:	Human, Mouse, Rat
Host:	Rabbit
Isotype:	IgG
Clonality:	Polyclonal
Immunogen:	KappaB ras antibody was raised against a 18 amino acid peptide from near the center of human KappaB ras 1.
Formulation:	PBS containing 0.02% sodium azide.
Concentration:	1ug/ul
Purification:	Affinity chromatography purified via peptide column
Conjugation:	Unconjugated
Storage:	Store at -20°C as received.
Stability:	Stable for 12 months from date of receipt.
Gene Name:	NFKB inhibitor interacting Ras like 1
Database Link:	AAF34998 Entrez Gene 28512 Human Q9NYS0



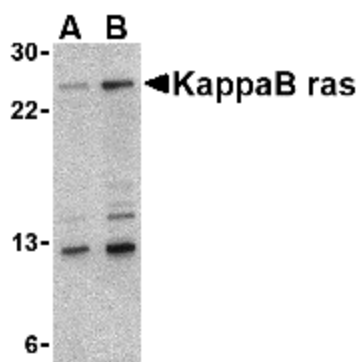
[View online »](#)

Background:

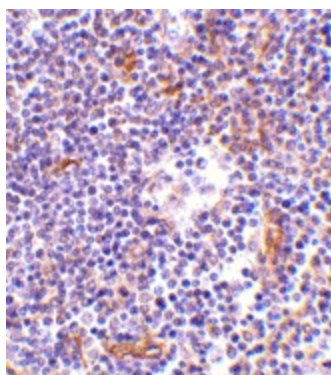
KappaB ras-1 (kappaB-ras-1) and kappaB-ras-2 are two small proteins that similar to Ras-like small GTPases that associate with IkappaB (IkappaB), an inhibitor of the transcription factor NF-kappaB. IkappaB exists in two homologous forms, IkappaB-alpha and IkappaB-beta, although IkappaB-beta contains a unique 47-amino acid region within its ankyrin domain. While inactive IkappaB-alpha-NF-kappaB complexes can shuttle in and out of the nucleus, IkappaB-beta-NF-kappaB complexes are retained exclusively in the cytoplasm. It is suggested that kappaB-ras proteins preferentially bind to the IkappaB-beta form through this unique insert within the ankyrin region, thus modulating the cellular location of IkappaB-beta and regulating the rate of degradation of IkappaB-beta. This antibody detects both kappaB-ras1 and kappaB-ras2.

Synonyms:

kappaB-Ras1; KBRAS1

Product images:

Western blot analysis of KappaB ras in 293 cell lysate with KappaB ras antibody at (A) 2 and (B) 4 ug/ml.



Immunohistochemistry of KappaB ras in human lymph node tissue with KappaB ras antibody at 1 ug/ml.