

Product datasheet for **TA306081**

TCCR (IL27RA) Rabbit Polyclonal Antibody

Product data:

Product Type:	Primary Antibodies
Applications:	IF, IHC, WB
Recommended Dilution:	WB: 1 ug/mL, ICC: 5 ug/mL, IF: 20 ug/mL
Reactivity:	Human
Host:	Rabbit
Isotype:	IgG
Clonality:	Polyclonal
Immunogen:	TCCR antibody was raised against a synthetic peptide corresponding to amino acids near the carboxy terminus of human TCCR precursor This sequence is identical to that of mouse TCCR.
Formulation:	PBS containing 0.02% sodium azide.
Concentration:	1ug/ul
Purification:	Affinity chromatography purified via peptide column
Conjugation:	Unconjugated
Storage:	Store at -20°C as received.
Stability:	Stable for 12 months from date of receipt.
Gene Name:	interleukin 27 receptor subunit alpha
Database Link:	NP_004834 Entrez Gene 9466 Human Q6UWB1

Background: Upon antigen challenge, T-helper cells differentiate into two functional distinct subsets, Th1 and Th2. Th1 cells produce IL-2, IFN-gamma and lymphotoxin-beta that augment cell mediated immune response while Th2 cells secrete IL-4, IL-5, and IL-10 that enhance humoral immunity. The function of T-helper cells is regulated by cytokines. A novel cytokine receptor was recently identified and cloned (1,2). It is a new member in the type I cytokine receptor family and designated TCCR for T-cell cytokine receptor and WSX-1 (1,2). TCCR deficient mice had impaired Th1 responses to protein antigen challenge, including decreased levels of IFN-gamma and Th1-dependent antibody IgG2a . TCCR is predominately expressed in thymus, spleen, lymph nodes and peripheral blood leukocytes.

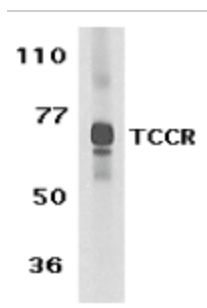


[View online »](#)

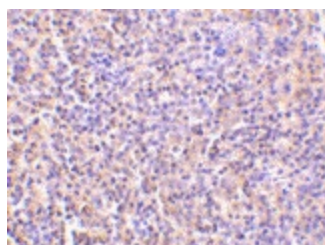
Synonyms: CRL1; IL-27RA; IL27R; TCCR; WSX1; zcytor1

Protein Families: Druggable Genome, Transmembrane

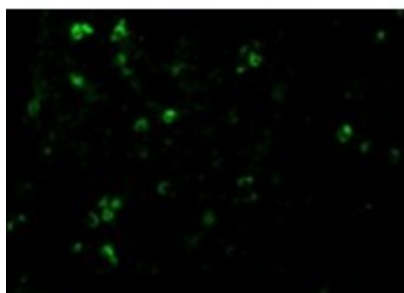
Product images:



Western blot analysis of TCCR expression in human spleen tissue lysate with TCCR antibody at 1 ug/ml.



Immunohistochemistry of TCCR in human spleen tissue with TCCR antibody at 5 ug/ml.



Immunofluorescence of TCCR in Human Spleen cells with TCCR antibody at 20 ug/mL.