

Product datasheet for **TA306079**

MCG10 (PCBP4) Rabbit Polyclonal Antibody

Product data:

Product Type:	Primary Antibodies
Applications:	IF, WB
Recommended Dilution:	WB: 0.5 - 2 ug/mL, ICC: 1 ug/mL, IF: 20 ug/mL
Reactivity:	Human
Host:	Rabbit
Isotype:	IgG
Clonality:	Polyclonal
Immunogen:	MCG10 antibody was raised against a 17 amino acid peptide from near the carboxy terminus of human MCG10.
Formulation:	PBS containing 0.02% sodium azide.
Concentration:	1ug/ul
Purification:	Affinity chromatography purified via peptide column
Conjugation:	Unconjugated
Storage:	Store at -20°C as received.
Stability:	Stable for 12 months from date of receipt.
Gene Name:	poly(rC) binding protein 4
Database Link:	NP_001167571 Entrez Gene 57060 Human P57723

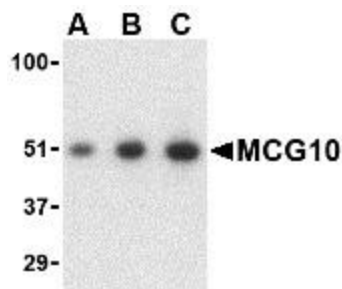
Background: MCG10 is a member of the KH-domain RNA-binding protein family. Proteins of this family also referred to as alpha-CPs, bind to RNA with specificity for C-rich pyrimidine regions. Alpha-CPs play important roles in post-transcriptional activities and have different cellular distributions. MCG10 is induced by p53 and DNA damage via two p53-responsive promoter elements. Its overexpression in transfected cells results in the suppression of cell proliferation by inducing apoptosis and cell cycle arrest in G2-M. Decreased expression of one isoform of MCG10 has been observed in many forms of lung cancer, leading to speculation that MCG10 can act as a tumor suppressor. Multiple alternatively spliced isoforms of MCG10 have been identified.



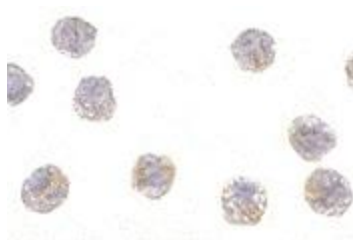
[View online »](#)

Synonyms: CBP; LIP4; MCG10

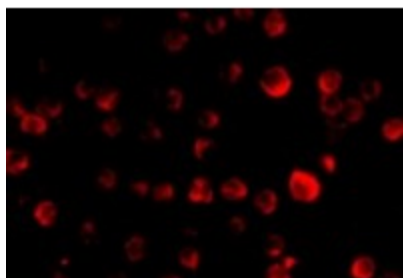
Product images:



Western blot analysis of MCG10 in HeLa cell lysate with MCG10 antibody at (A) 0.5, (B) 1 and (C) 2 ug/mL.



Immunocytochemistry of MCG10 in HeLa cells with MCG10 antibody at 1 ug/mL.



Immunofluorescence of MCG10 in HeLa cells with MCG10 antibody at 20 ug/mL.