

## Product datasheet for **TA306078**

### IL21 Receptor (IL21R) Rabbit Polyclonal Antibody

#### Product data:

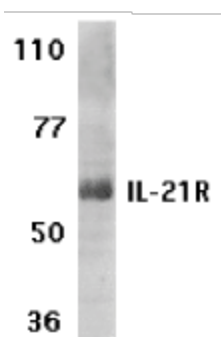
Product Type:	Primary Antibodies
Applications:	WB
Recommended Dilution:	WB: 1 ug/mL
Reactivity:	Human, Mouse, Rat
Host:	Rabbit
Isotype:	IgG
Clonality:	Polyclonal
Immunogen:	IL-21 receptor antibody was raised against a synthetic peptide corresponding to amino acids 20 to 32 of human IL-21 receptor precursor.
Formulation:	PBS containing 0.02% sodium azide.
Concentration:	1ug/ul
Purification:	Affinity chromatography purified via peptide column
Conjugation:	Unconjugated
Storage:	Store at -20°C as received.
Stability:	Stable for 12 months from date of receipt.
Gene Name:	interleukin 21 receptor
Database Link:	<a href="#">NP_068570</a> <a href="#">Entrez Gene 60504 Mouse</a> <a href="#">Entrez Gene 308977 Rat</a> <a href="#">Entrez Gene 50615 Human</a> <a href="#">Q9HBE5</a>
Background:	A novel cytokine related to IL2 and IL15 was recently identified and designated IL-21 . The receptor for IL-21 (IL-21R, also termed NILR for novel Interleukin receptor) is a new member of the class I cytokine receptor family (1,2). IL-21R forms a complex with the common cytokine receptor g chain, gc, and mediates IL-21 signaling (3,4). Both IL-21R and the gc are necessary for the IL-21 function. IL-21 and its receptor activate JAK-STAT signaling pathway. IL-21R is expressed in spleen, thymus, natural killer (NK), T and B cell lines. IL-21 plays a role in the proliferation and maturation of NK, B and T cell populations.
Synonyms:	CD360; NILR
Protein Families:	Druggable Genome, Transmembrane



[View online »](#)

Protein Pathways: Cytokine-cytokine receptor interaction, Jak-STAT signaling pathway

### Product images:



Western blot analysis of IL-21 receptor expression in human Raji cell lysate with IL-21 receptor antibody at 1 ug /ml.