

Product datasheet for **TA306073**

MTBP Rabbit Polyclonal Antibody

Product data:

Product Type:	Primary Antibodies
Applications:	IF, WB
Recommended Dilution:	WB: 1 ug/mL, ICC: 5 ug/mL, IF: 20 ug/mL
Reactivity:	Human
Host:	Rabbit
Isotype:	IgG
Clonality:	Polyclonal
Immunogen:	MTBP antibody was raised against a synthetic peptide corresponding to amino acids 122 to 139 of human MTBP, which differ from the mouse sequence by three amino acids (7) .
Formulation:	PBS containing 0.02% sodium azide.
Concentration:	1ug/ul
Purification:	Affinity chromatography purified via peptide column
Conjugation:	Unconjugated
Storage:	Store at -20°C as received.
Stability:	Stable for 12 months from date of receipt.
Gene Name:	MDM2 binding protein
Database Link:	NP_071328 Entrez Gene 27085 Human Q96DY7

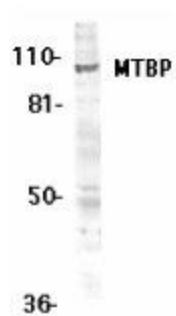
Background: The p53 tumor-suppressor gene integrates numerous signals that control cell life and death. Several novel molecules involved in p53 network, including Chk2 , p53R2 (2), p53AIP1 (3), Noxa (4), PIDD (5), PID/MTA2 (6) and MTBP (7), were recently discovered. The transcriptional activity of p53 is modulated by posttranslational regulations of the p53 protein including stabilization and acetylation. P53 transcriptionally activates MDM2 gene then the translated MDM2 protein binds to p53 and promotes the degradation of p53 leading to lowering the concentration of p53 protein. MDM2 inhibits both p53 mediated G1 arrest and apoptosis. A recently discovered protein termed MTBP was found to bind to MDM2 and to inhibit the modulation effect of MDM2 on p53 (7). MTBP is expressed in a variety of normal tissues (7).



[View online »](#)

Synonyms: MDM2BP

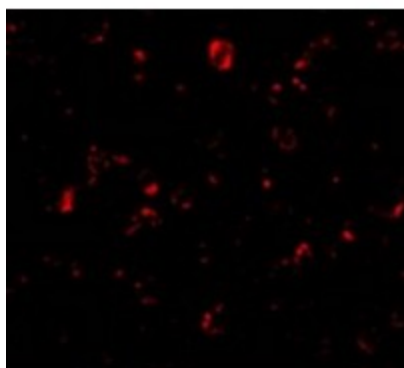
Product images:



Western blot analysis of MTBP expression in K562 whole cell lysates with MTBP antibody at 1 ug/ml.



Immunocytochemistry of MTBP in K562 cells with MTBP antibody at 5 ug/mL.



Immunofluorescence of MTBP in K562 cells with MTBP antibody at 20 ug/mL.