

## Product datasheet for **TA306070**

### AVEN Rabbit Polyclonal Antibody

#### Product data:

Product Type:	Primary Antibodies
Applications:	IF, IHC, WB
Recommended Dilution:	WB: 1 ug/mL, ICC: 5 ug/mL, IF: 20 ug/mL
Reactivity:	Human, Mouse, Rat
Host:	Rabbit
Isotype:	IgG
Clonality:	Polyclonal
Immunogen:	Aven antibody was raised against a 18 amino acid peptide from near the amino terminus of human Aven.
Formulation:	PBS containing 0.02% sodium azide.
Concentration:	1ug/ul
Purification:	Affinity chromatography purified via peptide column
Conjugation:	Unconjugated
Storage:	Store at -20°C as received.
Stability:	Stable for 12 months from date of receipt.
Gene Name:	apoptosis and caspase activation inhibitor
Database Link:	<a href="#">NP_065104</a>

[Entrez Gene 74268 Mouse](#)[Entrez Gene 311299 Rat](#)[Entrez Gene 57099 Human](#)  
[Q9NQS1](#)

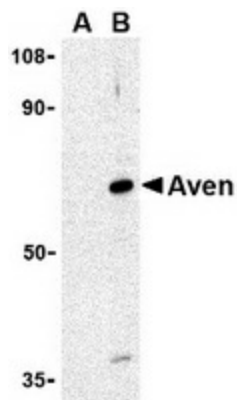
**Background:** Apoptosis plays a major role in normal organism development, tissue homeostasis, and removal of damaged cells. Disruption of this process has been implicated in a variety of diseases such as cancer. Aven is a recently discovered protein that blocks apoptosis induced by Apaf-1 and caspase-9. It is thought that Aven functions by binding to Bcl-xL, an antiapoptotic member of the Bcl-2 family, and to Apaf-1, possibly interfering with the ability of Apaf-1 to self-associate, suggesting that Aven impedes Apaf-1-mediated caspase activation. Higher levels of Aven mRNA are seen in patients with acute leukemia than in control patients, suggesting that Aven may be useful as a prognostic indicator in leukemia patients. Despite its predicted molecular weight, Aven often migrates at 55 kDa in SDS-PAGE.



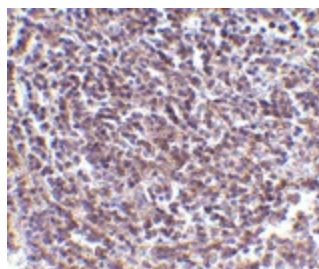
[View online »](#)

Synonyms: PDCD12

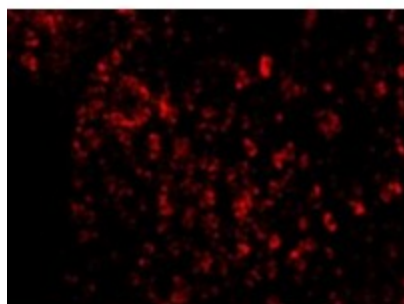
### Product images:



Western blot analysis of Aven in Raji cell lysate with Aven antibody at 1 ug/ml in (A) the presence and (B) the absence of blocking peptide.



Immunohistochemistry of Aven in human spleen tissue with Aven antibody at 5 ug/ml.



Immunofluorescence of AVEN in Human Spleen cells with AVEN antibody at 20 ug/mL.