

Product datasheet for **TA306063**

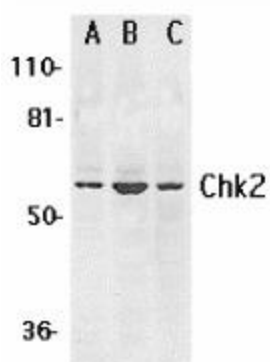
Chk2 (CHEK2) Rabbit Polyclonal Antibody

Product data:

Product Type:	Primary Antibodies
Applications:	IF, WB
Recommended Dilution:	WB: 1 ug/mL, ICC: 1 ug/mL
Reactivity:	Human, Mouse, Rat
Host:	Rabbit
Isotype:	IgG
Clonality:	Polyclonal
Immunogen:	Chk2 antibody was raised against a synthetic peptide corresponding to amino acids near the amino terminus of human Chk2 .
Formulation:	PBS containing 0.02% sodium azide.
Concentration:	1ug/ul
Purification:	Affinity chromatography purified via peptide column
Conjugation:	Unconjugated
Storage:	Store at -20°C as received.
Stability:	Stable for 12 months from date of receipt.
Gene Name:	checkpoint kinase 2
Database Link:	NP_009125 Entrez Gene 11200 Human O96017
Background:	The p53 tumor-suppressor gene integrates numerous signals that control cell life and death. Several novel molecules involved in p53 signaling, including Chk2 , p53R2 (2), p53AIP1 (3), Noxa (4), PIDD (5), and PID/MTA2 (6), were recently discovered. The checkpoint kinase Chk2 is the mammalian homologue of yeast Cds1/Rad53. In response to DNA damage, the checkpoint kinase ATM phosphorylates and activates Chk2, which in turn directly phosphorylates and activates p53 (7,8). Chk2 serves as ATM downstream effector to mediate activation of p53. Chk2 also phosphorylates and activates BRCA1, the product of a tumor suppressor gene that is mutated in breast and ovarian cancer (9).
Synonyms:	CDS1; CHK2; hCds1; HuCds1; LFS2; PP1425; RAD53



[View online »](#)

Product images:

Western blot analysis of Chk2 expression in K562 (A), Jurkat (B), and HL-60 (C) whole cell lysates with Chk2 antibody at 1 µg/ml.



Immunocytochemistry of Chk2 in Jurkat cells with Chk2 antibody at 1 µg/mL.