

Product datasheet for **TA306056**

IKAP (IKBKAP) Rabbit Polyclonal Antibody

Product data:

Product Type:	Primary Antibodies
Applications:	IF, WB
Recommended Dilution:	WB: 0.5 - 1 ug/mL, ICC: 1 ug/mL, IF: 20 ug/mL
Reactivity:	Human, Mouse
Host:	Rabbit
Isotype:	IgG
Clonality:	Polyclonal
Immunogen:	IKAP antibody was raised against a 16 amino acid peptide from near the carboxy terminus of human IKAP.
Formulation:	PBS containing 0.02% sodium azide.
Concentration:	1ug/ul
Purification:	Affinity chromatography purified via peptide column
Conjugation:	Unconjugated
Storage:	Store at -20°C as received.
Stability:	Stable for 12 months from date of receipt.
Gene Name:	inhibitor of kappa light polypeptide gene enhancer in B-cells, kinase complex-associated protein
Database Link:	AAC64258 Entrez Gene 8518 Human O95163



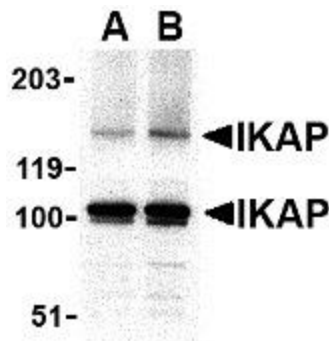
[View online »](#)

Background:

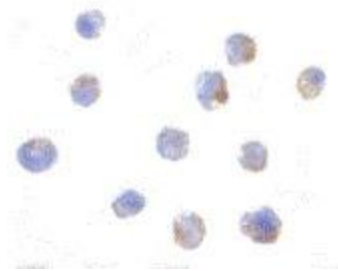
IKAP was initially identified as a scaffold protein of the IkappaB kinase complex that could bind to IKKalpha, IKKbeta, NF-kappaB, and the NF-kappaB-inducing kinase (NIK), although later evidence has cast doubt on this. More recent reports show that mutations in IKAP such as a frameshift leading to a truncated protein or a missense mutation that leads to defective phosphorylation are responsible for the autosomal recessive genetic disease familial dysautonomia (FD). Reports indicating that it forms part of the RNA polymerase II transcription elongation complex suggest that this disease may be due to compromised transcription elongation. More recently, it was shown that IKAP associates with c-Jun N-terminal kinase (JNK) and could specifically enhance JNK activation induced by the upstream JNK activators MEKK1 and ASK1, indicating another possible cause for FD. At least two isoforms of IKAP are known to exist.

Synonyms:

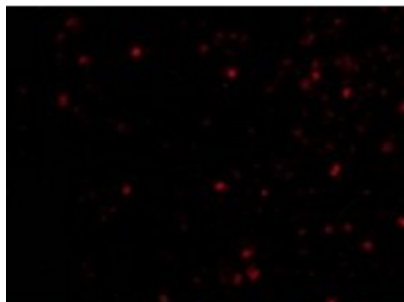
DYS; ELP1; FD; IKAP; IKI3; TOT1

Product images:


Western blot analysis of IKAP in A-20 cell lysate with IKAP antibody at in (A) 0.5, and (B) 1 ug/mL.



Immunocytochemistry of IKAP in A-20 cells with IKAP antibody at 1 ug/mL.



Immunofluorescence of IKAP in A20 cells with IKAP antibody at 20 ug/mL.