

Product datasheet for **TA306051**

DAP Kinase 2 (DAPK2) Rabbit Polyclonal Antibody

Product data:

Product Type:	Primary Antibodies
Applications:	IHC, WB
Recommended Dilution:	WB: 1 ug/mL, ICC: 2 ug/mL
Reactivity:	Human, Mouse, Rat
Host:	Rabbit
Isotype:	IgG
Clonality:	Polyclonal
Immunogen:	DAPK2 antibody was raised against a peptide corresponding to amino acids near the carboxy terminus of human DAPK2. The sequence of this antigenic peptide is identical to the corresponding amino acids of mouse origin (1,2).
Formulation:	PBS containing 0.02% sodium azide.
Concentration:	1ug/ul
Purification:	Affinity chromatography purified via peptide column
Conjugation:	Unconjugated
Storage:	Store at -20°C as received.
Stability:	Stable for 12 months from date of receipt.
Gene Name:	death associated protein kinase 2
Database Link:	BAA88063 Entrez Gene 23604 Human Q9UIK4



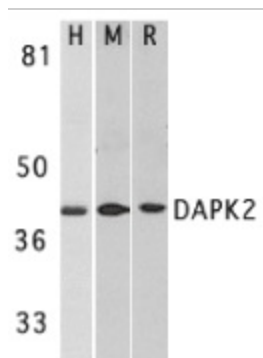
[View online »](#)

Background:

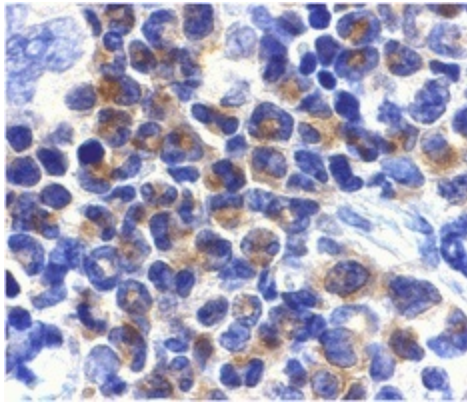
Apoptosis is mediated by death domain containing adapter molecules and a caspase family of proteases. Certain serine/threonine protein kinases, such as RIP and DAP kinase, are mediators of apoptosis. DAP kinase (DAPK) is pro-apoptotic calcium-regulated serine/threonine kinase containing death domain. Ectopic expression of DAPK induces cell death and suppresses oncogenic transformation. DAPK mediates IFN γ induced apoptosis. A novel DAP kinase-related protein was recently identified and designated DAPK2 and DRP-1 (1, 2). Ectopically expressed DAPK2 induced apoptosis in various types of cells (1,2). DAPK has high sequence homology to ZIP kinase and DRAK1/2, and they represent a novel family of serine/threonine kinases, which mediates apoptosis through their catalytic activities. The messenger RNA of DAPK2 is expressed in multiple human tissues (1).

Synonyms:

DRP-1; DRP1

Product images:

Western blot analysis of DAPK2 in A431 (H), mouse spleen (M), and rat kidney (R) lysates with DAPK2 antibody at 1 μ g/ml.



Immunohistochemistry of DAPK2 in mouse spleen cells with DAPK2 antibody at 2 μ g/ml.