

Product datasheet for **TA306045**

BNIP3L Rabbit Polyclonal Antibody

Product data:

Product Type:	Primary Antibodies
Applications:	IF, IHC, WB
Recommended Dilution:	WB: 1 ug/mL, ICC: 2 ug/mL, IF: 10 ug/mL
Reactivity:	Human
Host:	Rabbit
Isotype:	IgG
Clonality:	Polyclonal
Immunogen:	Bnip3L antibody was raised against a peptide corresponding to amino acids 77 to 92 of human origin, which are identical to those of mouse Bnip3L.
Formulation:	PBS containing 0.02% sodium azide.
Concentration:	1 mg/ml
Purification:	Affinity chromatography purified via peptide column
Conjugation:	Unconjugated
Storage:	Store at -20°C as received.
Stability:	Stable for 12 months from date of receipt.
Gene Name:	BCL2/adenovirus E1B 19kDa interacting protein 3-like
Database Link:	NP_004322 Entrez Gene 665 Human O60238



[View online »](#)

Background:

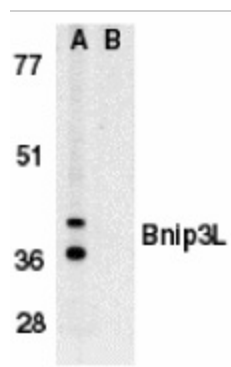
Members in the Bcl-2 family are critical regulators of apoptosis by either inhibiting or promoting cell death. Bcl-2 homology 3 (BH3) domain is a potent death domain. BH3 domain containing pro-apoptotic proteins, including Bad, Bax, Bid, Bik, Hrk, Nip3, and Bim, form a growing subclass of the Bcl-2 family. A novel BH3 domain containing protein was recently identified and designated Bnip3L, Bnip3alpha, and Nix (for Nip3-like protein X) (1-3). Bnip3L/Bnip3alpha/Nix is a homolog of the E1B 19K/Bcl-2 binding and pro-apoptotic protein Bnip3. Overexpression of Bnip3L induces apoptosis (2,3). Bnip3L interacts with and overcomes suppresses by Bcl-2 and Bcl-xL. Bnip3L is localized in mitochondria. The messenger RNA of Bnip3L is ubiquitously expressed in human tissues (1,2). Bnip3L and Bnip3 form a new subfamily of the pro-apoptotic mitochondrial proteins.

Synonyms:

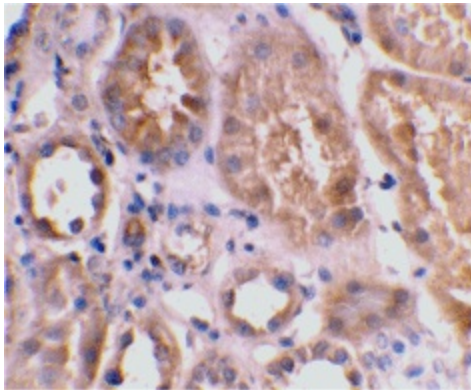
BNIP3a; NIX

Protein Families:

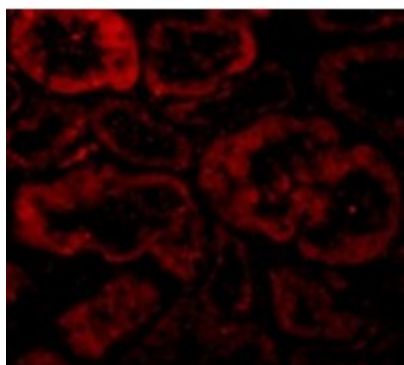
Druggable Genome, Transmembrane

Product images:


Western blot analysis of Bnip3L in K562 whole cell lysate in the absence (A), or presence (B) of immunogenic peptide (2289P) with Bnip3L antibody (IN) at 1 ug/ml.



Immunohistochemical staining of human kidney tissue using Bnip3L antibody at 2 ug/ml.



Immunofluorescence of Bnip3L in Human Kidney tissue with Bnip3L antibody at 10 ug/mL.