

Product datasheet for **TA306041**

FEM 1B (FEM1B) Rabbit Polyclonal Antibody

Product data:

Product Type:	Primary Antibodies
Applications:	IF, IHC, WB
Recommended Dilution:	WB: 1 ug/mL, ICC: 5 ug/mL, IF: 20 ug/mL
Reactivity:	Human, Mouse, Rat
Host:	Rabbit
Isotype:	IgG
Clonality:	Polyclonal
Immunogen:	F1A alpha antibody was raised against a peptide corresponding to amino acids 609 to 622 of human F1A alpha. This sequence is identical to the corresponding sequence of mouse FEM1b .
Formulation:	PBS containing 0.02% sodium azide.
Concentration:	1ug/ul
Purification:	Affinity chromatography purified via peptide column
Conjugation:	Unconjugated
Storage:	Store at -20°C as received.
Stability:	Stable for 12 months from date of receipt.
Gene Name:	fem-1 homolog B
Database Link:	AAF05314 Entrez Gene 10116 Human Q9UK73

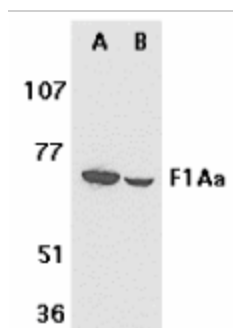
Background: Fas and tumor necrosis factor receptor 1 (TNFR1) are two prototype members in the death receptor family. A novel protein that associates with the intracellular domains of Fas and TNFR1 was recently identified and designated F1Aalpha and FEM1b (1,2). F1Aalpha/FEM1beta is the homologue of *C. elegans* sex determining protein FEM-1 (1,2). FEM-1/F1Aalpha is cleaved by CED-3 and caspase (3). FEM-1/F1Aalpha associates with CED-4 and its mammalian homologue Apaf-1 (3). Overexpression of F1Aalpha induces apoptosis. F1Aalpha is therefore a novel member of the death receptor associated protein that mediates apoptosis. F1Aalpha is expressed in a variety of human and mouse tissues (1,2)



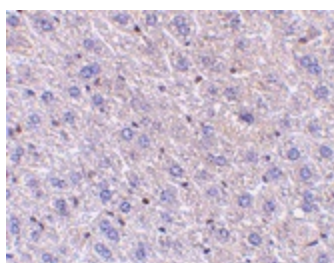
[View online »](#)

Synonyms: F1A-ALPHA; F1AA; FEM1-beta

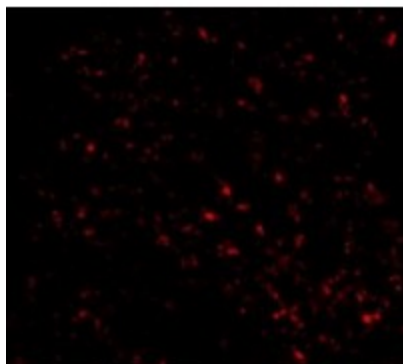
Product images:



Western blot analysis of F1A alpha in mouse (A) and rat (B) liver tissue lysates with F1A alpha antibody at 1 ug/ml.



Immunohistochemistry of F1Aa in mouse liver tissue with F1Aa antibody at 5 ug/ml.



Immunofluorescence of F1A alpha in Mouse Liver cells with F1A alpha antibody at 20 ug/mL.