

Product datasheet for **TA306039**

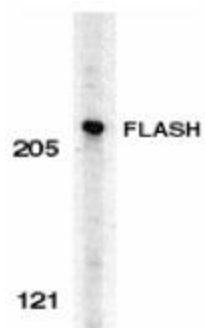
FLASH (CASP8AP2) Rabbit Polyclonal Antibody

Product data:

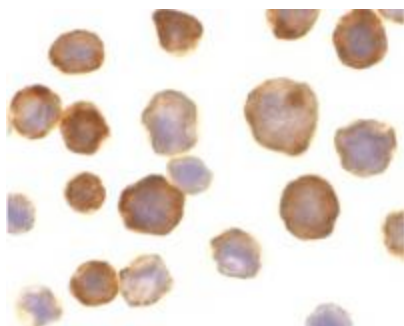
Product Type:	Primary Antibodies
Applications:	IF, WB
Recommended Dilution:	WB: 0.5 ug/mL, ICC: 10 ug/mL, IF: 10 ug/mL
Reactivity:	Human
Host:	Rabbit
Isotype:	IgG
Clonality:	Polyclonal
Immunogen:	FLASH antibody was raised against a synthetic peptide corresponding to amino acids near the carboxy-terminus of human FLASH which differ from those of mouse by one amino acid.
Formulation:	PBS containing 0.02% sodium azide.
Concentration:	1 mg/ml
Purification:	Affinity chromatography purified via peptide column
Conjugation:	Unconjugated
Storage:	Store at -20°C as received.
Stability:	Stable for 12 months from date of receipt.
Gene Name:	caspase 8 associated protein 2
Database Link:	AF165161 Entrez Gene 9994 Human Q9UKL3
Background:	A novel mammalian CED-4 homologous was recently identified and cloned in mouse (1) and human (2) and designated FLASH (for FLICE-associated huge protein). FLASH is involved in Fas induced apoptosis. It is recruited to Fas after the receptor cross-linking. Overexpression of wild type of FLASH facilitates and its dominant negative form inhibits Fas induced apoptosis. FLASH interacts with the DEDs of caspase-8 and FADD through the DED-like domain of FLASH and mediates activation of caspase-8 (1). There are parallels between FLASH and Apaf-1/CED-4 although there are arguments against their structural similarity (1,2). FLASH is widely expressed.
Synonyms:	CED-4; FLASH; RIP25



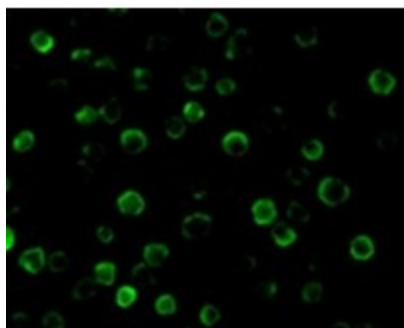
[View online »](#)

Product images:

Western blot analysis of FLASH in HeLa whole cell lysate with FLASH antibody at 0.5 ug/mL.



Immunocytochemistry of FLASH in HeLa cells with FLASH antibody at 10 ug/mL.



Immunofluorescence of FLASH in HeLa cells with FLASH antibody at 10 ug/mL.