

Product datasheet for **TA306035**

SKI Rabbit Polyclonal Antibody

Product data:

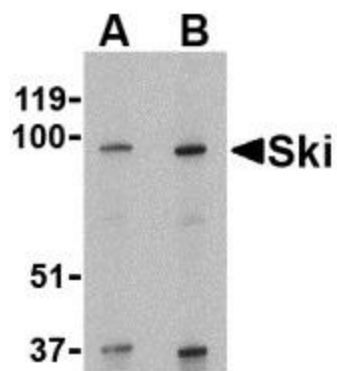
Product Type:	Primary Antibodies
Applications:	IF, WB
Recommended Dilution:	WB: 1 - 2 ug/mL, ICC: 20 ug/mL, IF: 20 ug/mL
Reactivity:	Human
Host:	Rabbit
Isotype:	IgG
Clonality:	Polyclonal
Immunogen:	Ski antibody was raised against a 14 amino acid peptide from near the amino terminus of human Ski.
Formulation:	PBS containing 0.02% sodium azide.
Concentration:	1ug/ul
Purification:	Affinity chromatography purified via peptide column
Conjugation:	Unconjugated
Storage:	Store at -20°C as received.
Stability:	Stable for 12 months from date of receipt.
Gene Name:	SKI proto-oncogene
Database Link:	NP_003027 Entrez Gene 6497 Human P12755
Background:	TGF-beta is a ubiquitously expressed cytokine that signals through the Smad protein family to regulate numerous cellular processes such as embryonic development and tumorigenesis. This signaling is negatively regulated by Ski, the mammalian homolog of the transforming protein of an avian retrovirus that induces oncogenic transformation of chicken embryo cells, and the related protein SnoN. Ski functions by binding to the Smad proteins and preventing their phosphorylation, thereby inhibiting their ability to bind DNA and activate the transcription of downstream genes. Ski will also bind to the Smad proteins specific to bone morphogenic proteins (BMPs) and block BMP signaling in mammalian cells.
Synonyms:	SGS; SKV



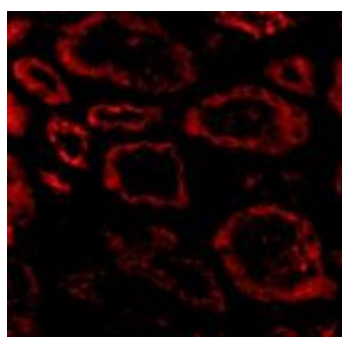
[View online »](#)

Protein Families: Druggable Genome

Product images:



Western blot analysis of Ski in human kidney tissue lysate with Ski antibody at (A) 1 and (B) 2 ug/mL.



Immunofluorescence of Ski in human kidney tissue with Ski antibody at 20 ug/mL.