

## Product datasheet for **TA306034**

### SnoN (SKIL) Rabbit Polyclonal Antibody

#### Product data:

Product Type:	Primary Antibodies
Applications:	IF, IHC, WB
Recommended Dilution:	WB: 0.5 - 1 ug/mL, ICC: 5 ug/mL, IF: 20 ug/mL
Reactivity:	Human, Mouse, Rat
Host:	Rabbit
Isotype:	IgG
Clonality:	Polyclonal
Immunogen:	SnoN antibody was raised against a 16 amino acid peptide from near the amino terminus of human SnoN .
Formulation:	PBS containing 0.02% sodium azide.
Concentration:	1ug/ul
Purification:	Affinity chromatography purified via peptide column
Conjugation:	Unconjugated
Storage:	Store at -20°C as received.
Stability:	Stable for 12 months from date of receipt.
Gene Name:	SKI-like proto-oncogene
Database Link:	<a href="#">NP_005405</a> <a href="#">Entrez Gene 6498 Human P12757</a>



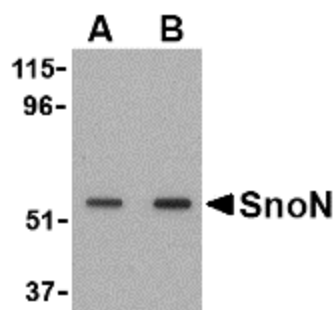
[View online »](#)

**Background:**

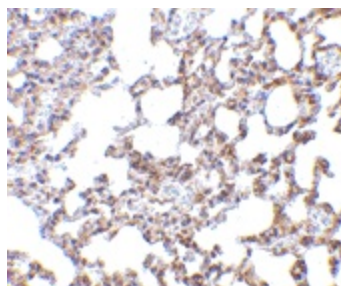
TGF-beta is a ubiquitously expressed cytokine that signals through the Smad protein family to regulate numerous cellular processes such as embryonic development and tumorigenesis. This signaling is negatively regulated by Ski, the mammalian homolog of the transforming protein of an avian retrovirus that induces oncogenic transformation of chicken embryo cells, and the related protein SnoN. Like Ski, SnoN functions by binding to the Smad proteins and preventing their phosphorylation, thereby inhibiting their ability to bind DNA and activate the transcription of downstream genes. SnoN is located primarily in the nucleus in cancer tissues or cells, but in the cytoplasm in normal tissues or primary epithelial cells. There are at least four alternately spliced isoforms of SnoN; SnoN antibody will recognize all isoforms (SnoN, SnoN2, SnoI, and SnoA).

**Synonyms:**

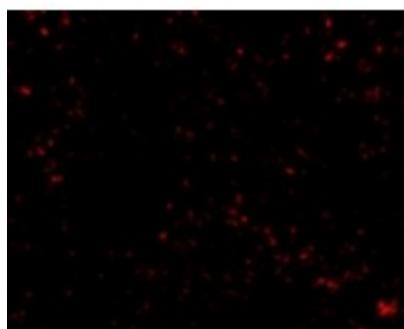
SNO; SnoA; SnoI; SnoN

**Product images:**

Western blot analysis of SnoN in A431 cell lysate with SnoN antibody at (A) 0.5 and (B) 1 ug/ml.



Immunohistochemistry of SnoN in mouse lung tissue with SnoN antibody at 5 ug/ml.



Immunofluorescence of SnoN in Mouse Lung cells with SnoN antibody at 20 ug/mL.