

## Product datasheet for **TA306031**

### BACE2 Rabbit Polyclonal Antibody

#### Product data:

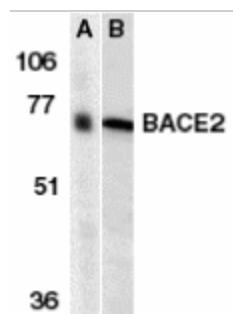
Product Type:	Primary Antibodies
Applications:	IHC, WB
Recommended Dilution:	WB: 1 ug/mL, ICC: 10 ug/mL
Reactivity:	Human, Mouse, Rat
Host:	Rabbit
Isotype:	IgG
Clonality:	Polyclonal
Immunogen:	BACE2 antibody was raised against a synthetic peptide corresponding to amino acids 44 to 59 of human BACE2.
Formulation:	PBS containing 0.02% sodium azide.
Purification:	Affinity chromatography purified via peptide column
Conjugation:	Unconjugated
Storage:	Store at -20°C as received.
Stability:	Stable for 12 months from date of receipt.
Gene Name:	beta-site APP-cleaving enzyme 2
Database Link:	<a href="#">AAF17078</a> <a href="#">Entrez Gene 25825 Human</a> <a href="#">Q9Y5Z0</a>

**Background:** Accumulation of the amyloid-beta (alphabeta) plaque in the cerebral cortex is a critical event in the pathogenesis of Alzheimer's disease. alphabeta peptide is generated by proteolytic cleavage of the beta-amyloid protein precursor (APP) at beta- and gamma-sites by proteases. The long-sought beta-secretase was recently identified by several groups independently and designated beta-site APP cleaving enzyme (BACE) and aspartyl protease 2 (Asp2) (1-4). A BACE homolog was recently cloned and designated BACE2, Asp1, DRAP (for Down region aspartic protease), and memapsin 1 (4-9). BACE2 also cleaves APP at beta-site and at a different site within alphabeta (8). BACE2 locates on chromosome 21q22.3, the so-called 'Down critical region', suggesting that BACE2 and alphabeta may also contribute to the pathogenesis of Down syndrome (6,7)

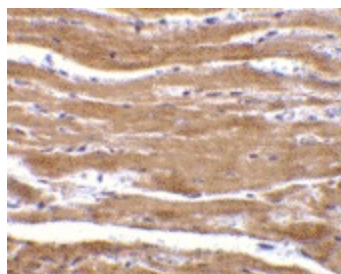

[View online »](#)

**Synonyms:** AEPLC; ALP56; ASP1; ASP21; BAE2; CDA13; CEAP1; DRAP

**Product images:**



Western blot analysis of BACE2 in human (A) and mouse (B) heart tissue lysates with BACE2 antibody at 1 ug/ml.



Immunohistochemistry of BACE2 in mouse heart with BACE2 antibody at 10 ug/ml.