

Product datasheet for **TA306015**

CX3CR1 Rabbit Polyclonal Antibody

Product data:

Product Type:	Primary Antibodies
Applications:	IF, IHC, WB
Recommended Dilution:	WB: 0.5 ug/mL, ICC: 10 ug/mL, IF: 20 ug/mL
Reactivity:	Human
Host:	Rabbit
Isotype:	IgG
Clonality:	Polyclonal
Immunogen:	CX3CR1 antibody was raised against a peptide corresponding to amino acids in a extracellular loop of human CX3CR1. The sequence is identical to that of rat CX3CR1 and differs from that of mouse CX3CR1 by one amino acid (3,4).
Formulation:	PBS containing 0.02% sodium azide.
Concentration:	1ug/ul
Purification:	Affinity chromatography purified via peptide column
Conjugation:	Unconjugated
Storage:	Antibody can be stored at 4°C up to one year. Antibodies should not be exposed to prolonged high temperatures.
Stability:	Stable for 12 months from date of receipt.
Gene Name:	C-X3-C motif chemokine receptor 1
Database Link:	NP_001328 Entrez Gene 1524 Human P49238



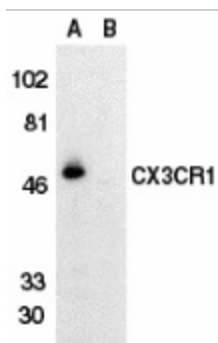
[View online »](#)

Background:

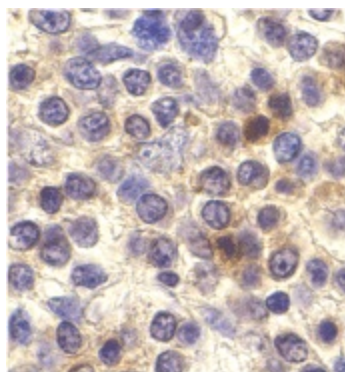
CX3CR1 is one of the chemokine receptors that are required as coreceptors for HIV infection. The genes encoding human, mouse, and rat CX3CR1 were cloned and designated V28 and CMKBRL1, CX3CR1, and RBS11, respectively, (1-4). The encoded seven transmembrane protein was recently identified as the receptor for a novel transmembrane molecule, fractalkine, and renamed CX3CR1 (5). Recently, CX3CR1 was found to serve as a coreceptor for HIV-1 and HIV-2 envelope fusion and virus infection, which can be inhibited by fractokine (6). CX3CR1 mediates leukocyte migration and adhesion (5). CX3CR1 is expressed in a variety of human tissues and cell lines (2).

Synonyms:

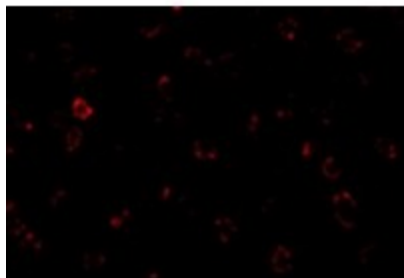
CCRL1; CMKBRL1; CMKDR1; GPR13; GPRV28; V28

Product images:

Western blot analysis of CX3CR1 in THP-1 cell lysate in the absence (lane A) or presence (lane B) of blocking peptide with CX3CR1 antibody at 1:500 dilution. Below: Immunohistochemistry of CX3CR1 in human spleen cells with CX3CR1 antibody at 10 ug/ml.



Immunohistochemistry of CX3CR1 in human spleen cells with CX3CR1 antibody at ug/ml.



Immunofluorescence of CX3CR1 in THP-1 cells with CX3CR1 antibody at 20 ug/mL.