

Product datasheet for **TA306001**

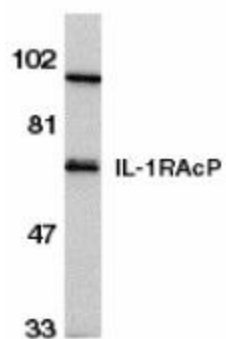
IL1RAP Rabbit Polyclonal Antibody

Product data:

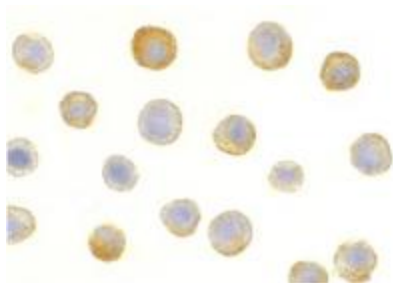
Product Type:	Primary Antibodies
Applications:	IF, WB
Recommended Dilution:	WB: 0.5 ug/mL, ICC: 5 ug/mL
Reactivity:	Human
Host:	Rabbit
Isotype:	IgG
Clonality:	Polyclonal
Immunogen:	IL-1RAcP antibody was raised against a peptide corresponding to amino acids near the carboxy terminus of IL-1RAcP, which differs from the sequence of mouse origin by three amino acids.
Formulation:	PBS containing 0.02% sodium azide.
Purification:	Affinity chromatography purified via peptide column
Conjugation:	Unconjugated
Storage:	Store at -20°C as received.
Stability:	Stable for 12 months from date of receipt.
Gene Name:	interleukin 1 receptor accessory protein
Database Link:	NP_002173 Entrez Gene 3556 Human Q9NPH3
Background:	The pro-inflammatory cytokine IL-1 induced cellular response requires two subunits of its receptor, IL-1 receptor I(IL-1RI) and IL-1 receptor accessory protein (IL-1RAcP) (1).IL-1 RAcP forms a complex with IL-1RI in response to IL-1 treatment. The IL-1 receptor-associated kinase (IRAK), which mediates activation of NF-kappaB inducing kinase (NIK) and of NF-kappaB, recruits to the IL-1R complex through IL-1 RAcP(2). IL-1 activation of stress-activated protein kinase and of acid sphingomyelinase also requires IL-1RAcP(3,4). Like IL-1RI, IL-1RAcP subunit is essential for IL-1 mediated cellular response. IL-1RAcP is expressed in many tissues.
Synonyms:	C3orf13; IL-1RAcP; IL1R3



[View online »](#)

Product images:

Western blot analysis of IL-1RAcP in HeLa whole cell lysate with IL-1RAcP antibody at 1:500 dilution.



Immunocytochemistry of IL-1RAcP in HeLa cells with IL-1RAcP antibody at 5 ug/mL.