

## Product datasheet for **TA305992**

### GPR15 Rabbit Polyclonal Antibody

#### Product data:

Product Type:	Primary Antibodies
Applications:	WB
Recommended Dilution:	WB: 0.5 - 1 ug/mL
Reactivity:	Human, Mouse, Rat
Host:	Rabbit
Isotype:	IgG
Clonality:	Polyclonal
Immunogen:	GPR15 antibody was raised against a peptide corresponding to amino acids near the amino terminus of human GPR15. The sequence differs from those of African green monkey and pig-tailed macaque BOB by one amino acid (2).
Formulation:	PBS containing 0.02% sodium azide.
Concentration:	1ug/ul
Purification:	Affinity chromatography purified via peptide column
Conjugation:	Unconjugated
Storage:	Store at -20°C as received.
Stability:	Stable for 12 months from date of receipt.
Gene Name:	G protein-coupled receptor 15
Database Link:	<a href="#">NP_005281</a> <a href="#">Entrez Gene 71223 Mouse</a> <a href="#">Entrez Gene 288181 Rat</a> <a href="#">Entrez Gene 2838 Human</a> <a href="#">P49685</a>
Background:	Human immunodeficiency virus (HIV) and related viruses require coreceptors to infect target cells. Some G protein-coupled receptors including CCR5, CXCR4, CCR3, CCR2b and CCR8 in the chemokine receptor family, and four new human molecules GPR15, STRL33, GPR1 and V28 were recently identified as HIV coreceptors. The genes encoding human and monkey GPR15/BOB (for G protein-coupled receptor 15 and brother of Bonzo, respectively,) were recently cloned. This novel G protein-coupled receptor serves as coreceptor for simian immunodeficiency virus (SIV), and for strains of HIV-2 and M-tropic HIV-1. The ligand for GPR15 has not been identified yet.

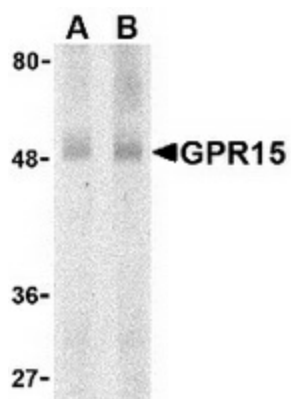


[View online »](#)

Synonyms: BOB

Protein Families: Druggable Genome, GPCR, Transmembrane

**Product images:**



Western blot analysis of GPR15 in human spleen lysate with GPR15 antibody at (A) 0.5 and (B) 1 ug/ml.