

Product datasheet for **TA305990**

CCR8 Rabbit Polyclonal Antibody

Product data:

Product Type:	Primary Antibodies
Applications:	WB
Recommended Dilution:	WB: 0.5 ug/mL
Reactivity:	Human
Host:	Rabbit
Isotype:	IgG
Clonality:	Polyclonal
Immunogen:	CCR8 antibody was raised against a peptide corresponding to amino acids 183 to 201 of human CCR8, which locate in the second extracellular loop.
Formulation:	PBS containing 0.02% sodium azide.
Concentration:	1ug/ul
Purification:	Affinity chromatography purified via peptide column
Conjugation:	Unconjugated
Storage:	Store at -20°C as received.
Stability:	Stable for 12 months from date of receipt.
Gene Name:	C-C motif chemokine receptor 8
Database Link:	NP_005192 Entrez Gene 1237 Human P51685
Background:	CCR8 is one of the chemokine receptors that are required as coreceptors for HIV infection. The genes encoding human and murine CCR8 were cloned and designated TER1, CKR-L1, and ChemR1. The encoded seven transmembrane protein was identified as the receptor for human CC chemokine I-309 and renamed CCR8. Recently, CCR8 was found to serve as a coreceptor for diverse T-cell tropic, dual-tropic and macrophage-tropic HIV-1 strains. CCR8 mediates CC chemokine I-309 induced monocyte chemoattraction and HIV-1 envelope fusion and virus infection, which can be prevented by the CCR8 ligand I-309. CCR8 is expressed in spleen, thymus and T lymphoblastic cell lines.
Synonyms:	CC-CKR-8; CCR-8; CDw198; CKRL1; CMKBR8; CMKBRL2; CY6; GPRCY6; TER1

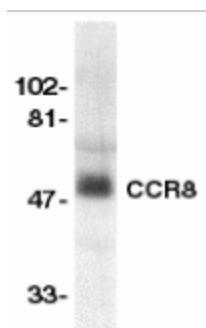


[View online »](#)

Protein Families: Druggable Genome, GPCR, Transmembrane

Protein Pathways: Chemokine signaling pathway, Cytokine-cytokine receptor interaction

Product images:



Western blot analysis of CCR8 in human spleen lysate with CCR8 antibody at 1:500 dilution.