

## Product datasheet for **TA305989**

### CX3CR1 Rabbit Polyclonal Antibody

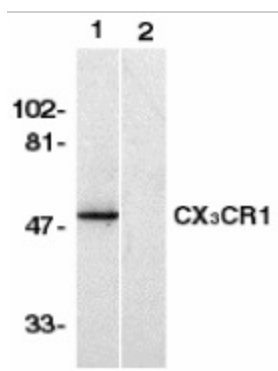
#### Product data:

Product Type:	Primary Antibodies
Applications:	IF, IHC, WB
Recommended Dilution:	WB: 0.5 - 1 ug/mL, IHC: 2 ug/mL, IF: 10 ug/mL, FACS: 0.1 ug/mL
Reactivity:	Human, Mouse, Rat
Host:	Rabbit
Isotype:	IgG
Clonality:	Polyclonal
Immunogen:	CX3CR1 antibody was raised against a 20 amino acid peptide near the amino terminus of human CX3CR1. The immunogen is located within the first 50 amino acids of CX3CR1.
Formulation:	PBS containing 0.02% sodium azide.
Concentration:	1ug/ul
Purification:	Affinity chromatography purified via peptide column
Conjugation:	Unconjugated
Storage:	Store at -20°C as received.
Stability:	Stable for 12 months from date of receipt.
Gene Name:	C-X3-C motif chemokine receptor 1
Database Link:	<a href="#">NP_001328</a> <a href="#">Entrez Gene 1524 Human P49238</a>
Background:	CX3CR1 is one of the chemokine receptors that are required as coreceptors for HIV infection. The genes encoding human, murine, and rat CX3CR1 were cloned and designated V28 and CMKBRL1, CX3CR1, and RBS11, respectively, (1-4). The encoded seven transmembrane protein was recently identified as the receptor for a novel transmembrane molecule, fractalkine, and renamed CX3CR1 (5). Recently, CX3CR1 was found to serve as a coreceptor for HIV-1 and HIV-2 envelope fusion and virus infection, which can be inhibited by fractokine (6). CX3CR1 mediates leukocyte migration and adhesion (5). CX3CR1 is expressed in a variety of human tissues and cell lines (2).
Synonyms:	CCRL1; CMKBRL1; CMKDR1; GPR13; GPRV28; V28

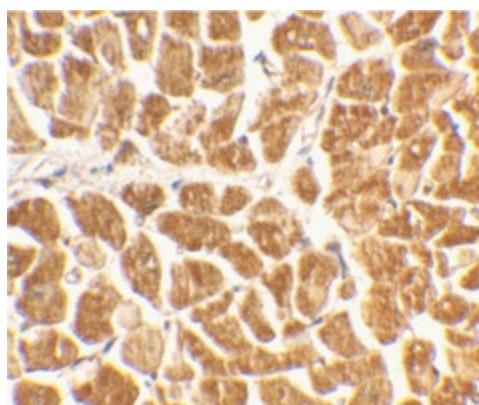


[View online »](#)

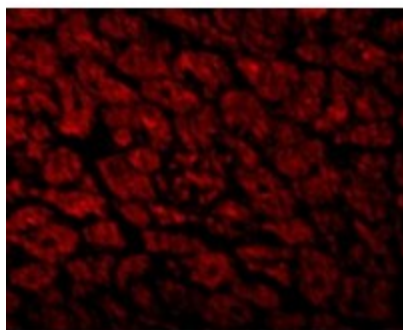
## Product images:



Western blot analysis of CX3CR1 in human spleen lysate with CX3CR1 antibody in the absence (lane 1) or presence of blocking peptide (lane 2).



Immunohistochemical staining of human heart tissue using CX3CR1 antibody at 2 ug/ml



Immunofluorescence of CX3CR1 in Human Heart cells with CX3CR1 antibody at 10 ug/mL.