

## Product datasheet for **TA305984**

### **RIP2 (RIPK2) Rabbit Polyclonal Antibody**

#### **Product data:**

<b>Product Type:</b>	Primary Antibodies
<b>Applications:</b>	IF, WB
<b>Recommended Dilution:</b>	WB: 1 ug/mL, ICC: 10 ug/mL
<b>Reactivity:</b>	Human, Mouse, Rat
<b>Host:</b>	Rabbit
<b>Isotype:</b>	IgG
<b>Clonality:</b>	Polyclonal
<b>Immunogen:</b>	RICK antibody was raised against a peptide corresponding to 20 amino acids near the amino terminus of human RICK. The immunogen is located within the first 50 amino acids of RICK.
<b>Formulation:</b>	PBS containing 0.02% sodium azide.
<b>Purification:</b>	Affinity chromatography purified via peptide column
<b>Conjugation:</b>	Unconjugated
<b>Storage:</b>	Antibody can be stored at 4°C up to one year. Antibodies should not be exposed to prolonged high temperatures.
<b>Stability:</b>	Stable for 12 months from date of receipt.
<b>Gene Name:</b>	receptor interacting serine/threonine kinase 2
<b>Database Link:</b>	<a href="#">NP_003812</a> <a href="#">Entrez Gene 192656</a> <a href="#">MouseEntrez Gene 362491</a> <a href="#">RatEntrez Gene 8767</a> <a href="#">Human O43353</a>



[View online »](#)

**Background:**

Apoptosis is mediated by death domain (DD) and/or caspase recruitment domain (CARD) containing molecules and a caspase family of proteases. DD-containing serine/threonine kinase RIP regulates Fas-induced apoptosis. A novel CARD-containing serine/threonine kinase was recently identified and designated RICK/RIP2/CARDIAK for RIP-like interacting CLARP kinase, receptor interacting protein-2, and CARD-containing ICE associated kinase, respectively, (1-3). RICK contains an N-terminal kinase catalytic domain and a C-terminal CARD domain. Overexpression of RICK induced apoptosis and activation of NF-kappaB and JNK. RICK interacts with members of the TRAF family, CLARP and caspase-1. Thus, RICK represents a novel kinase that regulates TNF and Fas induced-apoptosis and that is involved in the generation of proinflammatory cytokine IL-1b. The messenger RNA of RICK is expressed in multiple human tissues.

**Synonyms:**

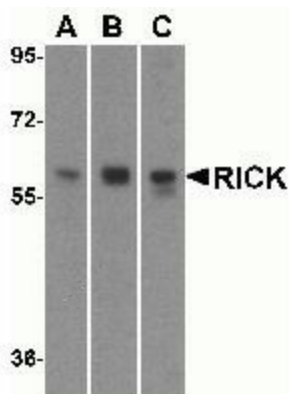
CARD3; CARDIAK; CCK; GIG30; RICK; RIP2

**Protein Families:**

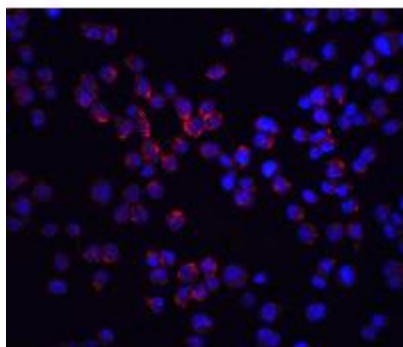
Druggable Genome, Protein Kinase

**Protein Pathways:**

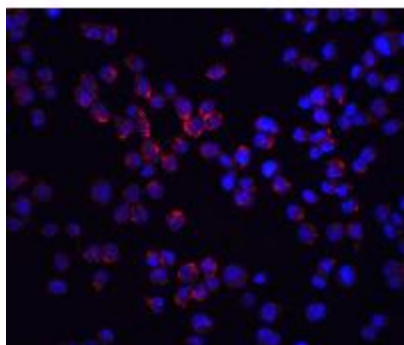
Neurotrophin signaling pathway, NOD-like receptor signaling pathway

**Product images:**

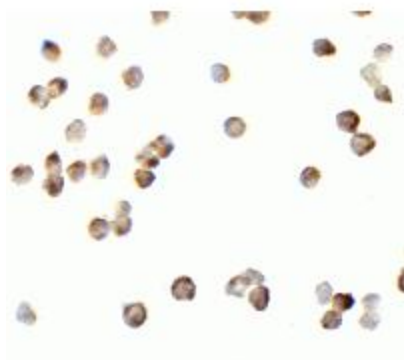
Western blot analysis of RICK in (A) HeLa, (B) Ramos and (C) EL4 cell lysate with RICK antibody at 1 µg/ml.



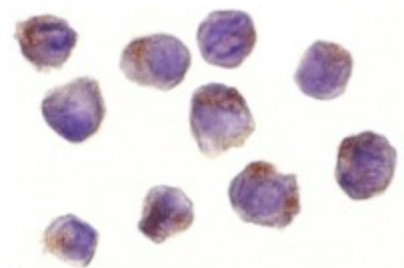
Immunofluorescence of RICK in K562 cells with RICK antibody at 20 µg/ml.



Immunofluorescence of RICK in K562 cells with RICK antibody at 20ug/ml.



Immunocytochemistry of RICK in K562 cells with RICK antibody at 2.5ug/ml.



Immunocytochemistry of RICK in A431 cells with RICK antibody at 10ug/ml.