

## Product datasheet for **TA305980**

### **Bim (BCL2L11) Rabbit Polyclonal Antibody**

#### **Product data:**

<b>Product Type:</b>	Primary Antibodies
<b>Applications:</b>	IF, IHC, WB
<b>Recommended Dilution:</b>	IHC: 20 ug/mL
<b>Reactivity:</b>	Human, Mouse, Rat
<b>Host:</b>	Rabbit
<b>Isotype:</b>	IgG
<b>Clonality:</b>	Polyclonal
<b>Immunogen:</b>	Bim antibody was raised against a 20 amino acid peptide corresponding to amino acids near the amino terminus of human Bim. The immunogen is located within the first 50 amino acids of Bim.
<b>Formulation:</b>	PBS containing 0.02% sodium azide.
<b>Concentration:</b>	1ug/ul
<b>Purification:</b>	Affinity chromatography purified via peptide column
<b>Conjugation:</b>	Unconjugated
<b>Storage:</b>	Store at -20°C as received.
<b>Stability:</b>	Stable for 12 months from date of receipt.
<b>Gene Name:</b>	BCL2 like 11
<b>Database Link:</b>	<a href="#">NP_006529</a> <a href="#">Entrez Gene 12125 Mouse</a> <a href="#">Entrez Gene 64547 Rat</a> <a href="#">Entrez Gene 10018 Human</a> <a href="#">O43521</a>
<b>Background:</b>	Members in the Bcl-2 family are critical regulators of apoptosis by either inhibiting or promoting cell death. Bcl-2 homology 3 (BH3) domain is a potent death domain. BH3 domain containing pro-apoptotic proteins, including Bad, Bax, Bid, Bik, and Hrk, form a growing subclass of the Bcl-2 family. A novel BH3 domain containing protein was recently identified and designated Bim or BOD in human, mouse and rat (1,2). Bim/BOD interacts with diverse members in the pro-survival Bcl-2 sub-family including Bcl-2, Bcl-xL and Bcl-w. Bim/BOD induces apoptosis. The messenger RNA of Bim is ubiquitously expressed in multiple tissues and cell lines (1,2).

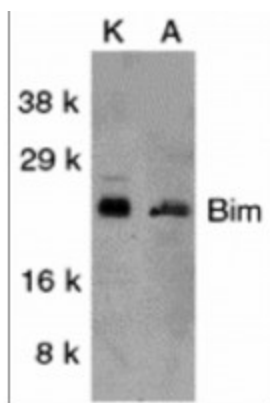


[View online »](#)

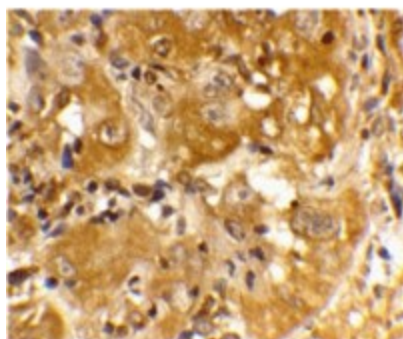
Synonyms: BAM; BIM; BOD

Protein Families: Druggable Genome

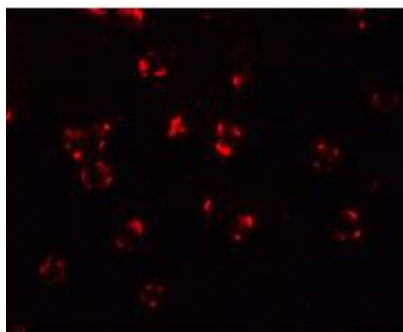
**Product images:**



Western blot analysis of Bim in K562 (K) and A549 (A) whole cell lysates with Bim antibody at 1ug/ml.



Immunohistochemistry of Bim in human skin cancer cells with Bim antibody at 20ug/ml.



Immunofluorescence of Bim in K562 cells with Bim Antibody at 20ug/ml.