

Product datasheet for **TA305973**

APAF1 Rabbit Polyclonal Antibody

Product data:

Product Type:	Primary Antibodies
Applications:	IHC, WB
Recommended Dilution:	WB: 1 ug/mL, IHC: 20 ug/mL
Reactivity:	Human, Mouse, Rat
Host:	Rabbit
Isotype:	IgG
Clonality:	Polyclonal
Immunogen:	Apaf1 antibody was raised against a peptide corresponding to amino acids near the carboxy terminus of human Apaf1. The sequence of the immunogenic peptide differs from that of murine Apaf1 by one amino acid .
Formulation:	PBS containing 0.02% sodium azide.
Concentration:	1ug/ul
Purification:	Affinity chromatography purified via peptide column
Conjugation:	Unconjugated
Storage:	Store at -20°C as received.
Stability:	Stable for 12 months from date of receipt.
Gene Name:	apoptotic peptidase activating factor 1
Database Link:	AAC51678 Entrez Gene 317 Human O14727



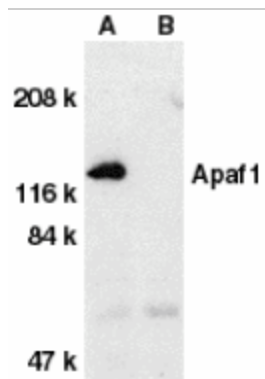
[View online »](#)

Background:

Apoptosis is related to many diseases and induced by a family of cell death receptors and their ligands. Cell death signals are transduced by death domain containing adapter molecules and members of the caspase family of proteases. The mammalian homologous of the key cell death gene CED-4 in *C. elegans* was identified recently from human and mouse and designated Apaf1 for apoptosis protease-activating factor 1 (1,2). Apaf1 binds to cytochrome c (Apaf2) and caspase-9 (Apaf3), which leads to caspase-9 activation. Activated caspase-9 in turn cleaves and activates caspase-3 that is one of the key proteases, being responsible for the proteolytic cleavage of many key proteins in apoptosis (3). Apaf1 can also associate with caspase-4 and caspase-8 (4). Apaf1 transcript is ubiquitously expressed in human tissues .

Synonyms:

APAF-1; CED4

Product images:


Western blot analysis of Apaf1 in human heart tissue lysate with Apaf1 antibody at 1 ug/ml dilution in the absence (A) or presence (B) of blocking peptide.



Immunohistochemistry of Apaf1 in human skin tissue with Apaf1 antibody at 20 ug/ml.