

Product datasheet for **TA305971**

Dffb Rabbit Polyclonal Antibody

Product data:

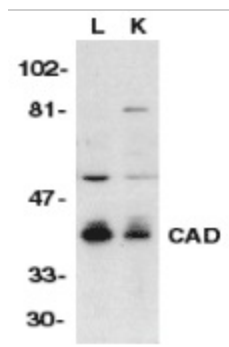
Product Type:	Primary Antibodies
Applications:	IF, IHC, WB
Recommended Dilution:	WB: 0.5 ug/mL, IHC: 1 ug/mL, IF: 10 ug/mL
Reactivity:	Mouse
Host:	Rabbit
Isotype:	IgG
Clonality:	Polyclonal
Immunogen:	CAD antibody was raised against a peptide corresponding to amino acids 314 to 329 of murine CAD .
Formulation:	PBS containing 0.02% sodium azide.
Purification:	Affinity chromatography purified via peptide column
Conjugation:	Unconjugated
Storage:	Store at -20°C as received.
Stability:	Stable for 12 months from date of receipt.
Gene Name:	DNA fragmentation factor, beta subunit
Database Link:	NP_031885 Entrez Gene 13368 Mouse Q54788
Background:	Apoptosis is related to many diseases and induced by a family of cell death receptors and their ligands. Cell death signals are transduced by death domain containing adapter molecules and members of the caspase family of proteases. These death signals finally cause the degradation of chromosomal DNA by activated DNase. A mouse DNase that causes DNA fragmentation was identified recently and designated CAD (for caspase activated deoxyribonuclease) (1,2). The human homologue of mouse CAD was more recently identified by two groups independently and termed CPAN and DFF40 (3,4). Human DFF45 and its mouse homologue ICAD are the inhibitors of CPAN/DFF40 and CAD, respectively (1, 2, 5). Upon cleavage of DFF45/ICAD by activated caspase, DFF40/CAD is released and activated and eventually causes the degradation of DNA in the nuclei (1-4). Activation of CAD/DFF40, which causes DNA degradation, is the hallmark of apoptotic cell death.



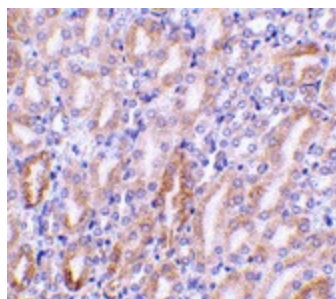
[View online »](#)

Synonyms: CAD; CPAN; DFF-40; DFF2; DFF40

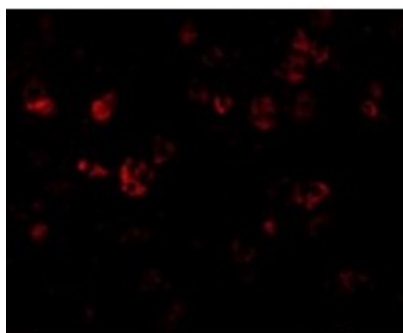
Product images:



Western blot analysis of CAD in mouse lung (L) and kidney (K) tissue lysates with CAD antibody at 1:500 dilution.



Immunohistochemistry of CAD in mouse kidney tissue with CAD antibody at 1 ug/ml.



Immunofluorescence of CAD in Mouse Kidney cells with CAD antibody at 10 ug/mL.