

Product datasheet for **TA305954**

Gfra3 Rabbit Polyclonal Antibody

Product data:

Product Type:	Primary Antibodies
Applications:	IHC, WB
Recommended Dilution:	WB: 0.5 ug/mL, IHC: 10 ug/mL
Reactivity:	Human, Mouse, Rat
Host:	Rabbit
Isotype:	IgG
Clonality:	Polyclonal
Immunogen:	GFR alpha 3 antibody was raised against a peptide corresponding to amino acids from 347 to 360 of murine GFR alpha 3.
Formulation:	PBS containing 0.02% sodium azide.
Concentration:	1ug/ul
Purification:	Antibody is DEAE purified
Conjugation:	Unconjugated
Storage:	Store at -20°C as received.
Stability:	Stable for 12 months from date of receipt.
Gene Name:	glial cell line derived neurotrophic factor family receptor alpha 3
Database Link:	NP_034410 Entrez Gene 14587 Mouse O35118

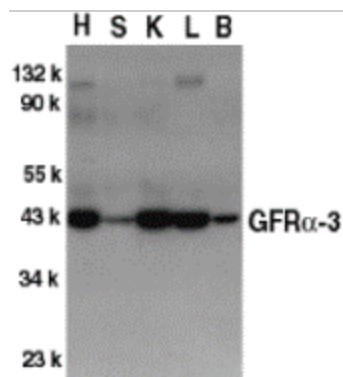
Background: Members of the glial cell line-derived neurotrophic factor (GDNF) family including GDNF and neurturin (NTN) play essential roles in the control of vertebrate neuron survival and differentiation. A new member of the GDNF family was recently identified and designated persephin. Physiological responses to these neurotrophic factors require two receptor subunits, the novel glycosylphosphatidylinositol linked protein GFRalpha and Ret receptor tyrosine kinase GFRbeta (2). Following the findings of GFRA-1 and -2, a novel receptor in GFRalpha family was identified very recently from human and mouse and designated GFRalpha-3. GFRalpha-3 binds persephin, thus, persephin, GFRalpha-3, and Ret PTK form a complex to transduce persephin signal and to mediate persephin function.



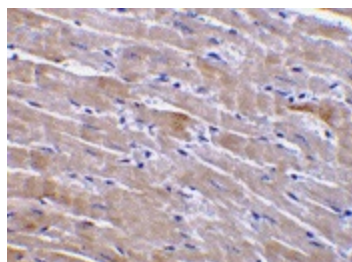
[View online »](#)

Synonyms: GDNFR3

Product images:



Western blot analysis of GFR alpha 3 in crude cell membrane fractions of mouse heart (H), spleen (S), kidney (K), liver (L), and brain (B), respectively, with GFR alpha 3 antibody at 1:500 dilution.



Immunohistochemistry of GFRA-3 in mouse heart tissue with GFRA-3 antibody at 10 ug/ml.