

Product datasheet for **TA305953**

GDNF Receptor alpha 2 (GFRA2) Rabbit Polyclonal Antibody

Product data:

Product Type:	Primary Antibodies
Applications:	IF, WB
Recommended Dilution:	WB: 1 ug/mL, ICC: 5 ug/mL
Reactivity:	Human, Mouse, Rat
Host:	Rabbit
Isotype:	IgG
Clonality:	Polyclonal
Immunogen:	GFR alpha 2 antibody was raised against a peptide corresponding to amino acids 377 to 391 of human GFR alpha 2. The amino acid sequences of immunogenic peptide are identical to those of mouse and rat.
Formulation:	PBS containing 0.02% sodium azide.
Concentration:	1ug/ul
Purification:	Antibody is DEAE purified
Conjugation:	Unconjugated
Storage:	Store at -20°C as received.
Stability:	Stable for 12 months from date of receipt.
Gene Name:	GDNF family receptor alpha 2
Database Link:	AAC52036 Entrez Gene 2675 Human O00451



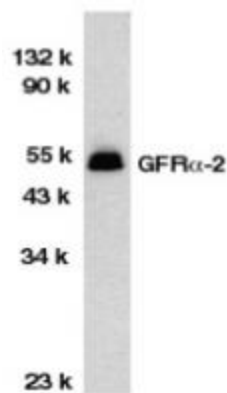
[View online »](#)

Background:

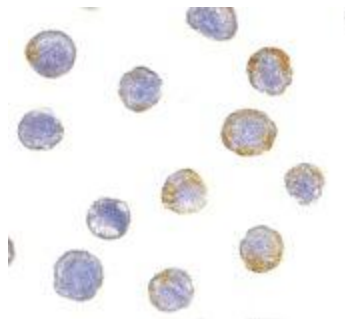
Members of the glial cell line-derived neurotrophic factor (GDNF) family, including GDNF and neurturin (NTN), play key roles in the control of vertebrate neuron survival and differentiation. Physiological responses to NTN require the presence of a novel glycosylphosphatidylinositol linked protein NTN α , which is a cell surface receptor for NTN. The cDNAs encoding NTN α from human, rat, chicken, and mouse have been cloned recently. NTN α was also termed GDNFR β , Ret ligand 2 (RETL2) or TGF β -related neurotrophic factor receptor 2 (TrnR2) and nominated as GFR α -2 recently. GFR α -2 binds NTN and mediates activation of RET receptor tyrosine kinase by both NTN and GDNF. Thus, NTN, GFR α -2, and the Ret PTK form a complex to transduce NTN signal and to mediate NTN function.

Synonyms:

GDNFRB; NRTNR-ALPHA; NTNRA; RETL2; TRNR2

Product images:

Western blot analysis of GFR alpha 2 in HeLa total cell lysate with GFR alpha 2 antibody at 1:1000 dilution.



Immunocytochemistry of GFR alpha 2 in HeLa cells with GFR alpha 2 antibody at 5 ug/mL.