

Product datasheet for **TA305948**

SIRP alpha (SIRPA) Rabbit Polyclonal Antibody

Product data:

Product Type:	Primary Antibodies
Applications:	IF, WB
Recommended Dilution:	WB: 0.5 - 1 ug/mL, ICC: 1 ug/mL
Reactivity:	Human, Mouse, Rat
Host:	Rabbit
Isotype:	IgG
Clonality:	Polyclonal
Immunogen:	SIRP alpha antibody was raised against a peptide corresponding to amino acids near the carboxy terminus of human SIRP alpha 1? The sequences of the immunogenic peptide differ from those of mouse, rat and bovine by one amino acid.
Formulation:	PBS containing 0.02% sodium azide.
Purification:	Antibody is DEAE purified
Conjugation:	Unconjugated
Storage:	Store at -20°C as received.
Stability:	Stable for 12 months from date of receipt.
Gene Name:	signal regulatory protein alpha
Database Link:	NP_542970 Entrez Gene 140885 Human P78324

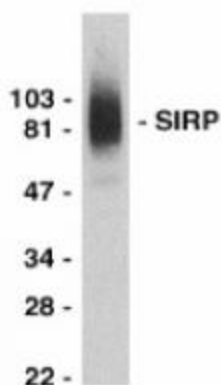
[View online »](#)

Background:

Protein tyrosine phosphatases (PTPases) SHP-1 and SHP-2 are critical regulators in the intracellular signaling pathways that result in cell responses such as mitosis, differentiation, migration, survival, transformation or death. SHP-2 is a signal transducer for several receptor tyrosine kinases and cytokine receptors. A novel SHP-2 associated glycoprotein was recently cloned from human, rat, mouse and cattle by several labs and was designated SIRPalph, SHPS-1, MyD-1, BIT and p84. SIRPalph is a new gene family containing at least fifteen members. SIRPalph is a substrate of many activated tyrosine kinases such as insulin receptor, EGFR, PDGFR and src, and a specific docking protein for SHP-2. SIRPalph has regulatory effects on cellular responses induced by serum, growth factors, insulin, oncogenes, growth hormones and cell adhesion and plays a general role in different physiological and pathological processes.

Synonyms:

BIT; CD172A; MFR; MYD-1; P84; PTPNS1; SHPS1; SIRP

Product images:


Western blot analysis of SIRP alpha in THP-1 whole cell lysate with SIRP alpha antibody at 1:2000 dilution.



Immunocytochemistry of SIRP alpha in THP-1 cells with SIRP alpha antibody at 1 ug/mL.