

Product datasheet for **TA305941**

CCR5 Rabbit Polyclonal Antibody

Product data:

Product Type:	Primary Antibodies
Applications:	IF, IHC, WB
Recommended Dilution:	WB: 1 ug/mL, IHC: 20 ug/mL
Reactivity:	Human
Host:	Rabbit
Isotype:	IgG
Clonality:	Polyclonal
Immunogen:	CCR5 antibody was raised against a 15 amino acid peptide near the amino terminus of human CCR5. The immunogen is located within the first 50 amino acids of CCR5.
Formulation:	PBS containing 0.02% sodium azide.
Concentration:	1 mg/ml
Purification:	Antibody is DEAE purified
Conjugation:	Unconjugated
Storage:	Store at -20°C as received.
Stability:	Stable for 12 months from date of receipt.
Gene Name:	C-C motif chemokine receptor 5 (gene/pseudogene)
Database Link:	NP_000570 Entrez Gene 1234 Human P51681



[View online »](#)

Background:

Human immunodeficiency virus (HIV) and related virus require coreceptors, in addition to CD4, to infect target cells. Some G protein-coupled receptors including CCR5, CXCR4, CCR3, CCR2b and CCR8 in the chemokine receptor family, and four new human molecules GPR15, STRL33, GPR1 and V28 were recently identified as HIV coreceptors. Among them, CCR5 (CC-CKR-5) is a principal coreceptor for macrophage- and dual-tropic HIV-1 strains fusion and entry of human white blood cells. CCR5 is required for the infection by HIV-1, HIV-2, and SIV. The b-chemokines RANTES, MIP-1alpha and MIP-1beta are the ligands for CCR5 and prevent infection by M-tropic HIV-1. CXC5 associates with the surface CD4-gp120 of HIV complex and leads to membrane fusion and virus entry of target cells. The amino-terminal domain and the extracellular loops of CCR5 serve as HIV binding sites. CCR5 messenger RNA is expressed in lymphoid organs and monocytes.

Synonyms:

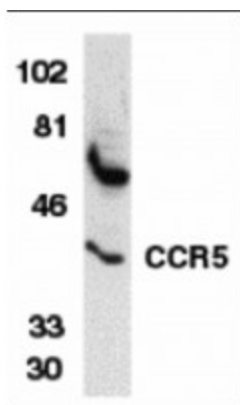
CC-CKR-5; CCCKR5; CCR-5; CD195; CKR-5; CKR5; CMKBR5; IDDM22

Protein Families:

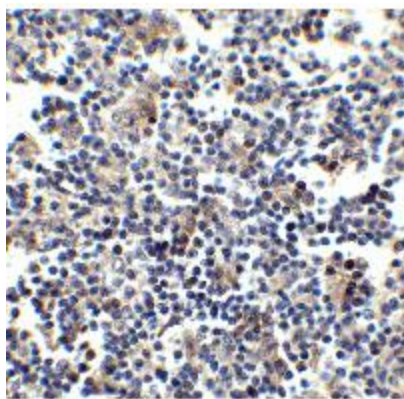
Druggable Genome, ES Cell Differentiation/IPS, GPCR, Transmembrane

Protein Pathways:

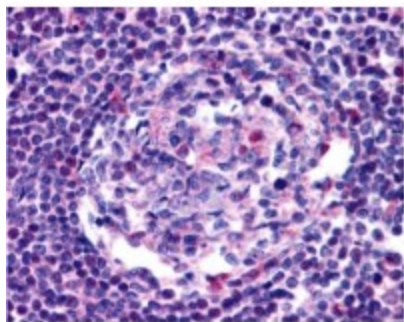
Chemokine signaling pathway, Cytokine-cytokine receptor interaction, Endocytosis

Product images:

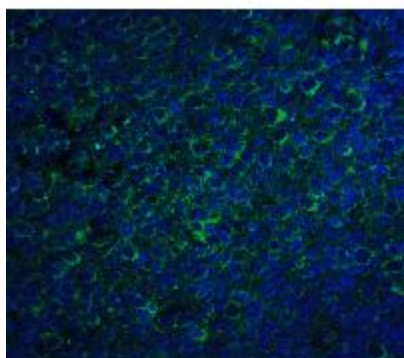
Western blot analysis of CCR5 in THP-1 whole cell lysate with CCR5 antibody at 1ug/ml.



Immunohistochemistry of CCR5 in human lymph node tissue with CCR5 antibody at 2.5ug/ml.



Immunohistochemistry of CCR5 in human lymph node tissue with CCR5 antibody at 20ug/ml.



Immunofluorescence of CCR5 in human lymph node tissue with CCR5 antibody at 20ug/ml.