

Product datasheet for **TA305939**

TEP1 Rabbit Polyclonal Antibody

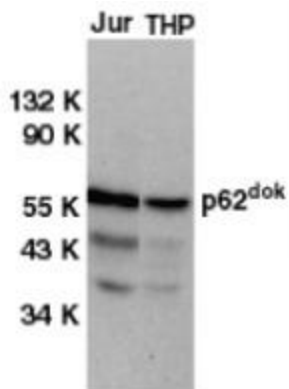
Product data:

| | |
|-----------------------|--|
| Product Type: | Primary Antibodies |
| Applications: | IF, WB |
| Recommended Dilution: | WB: 1 ug/mL, ICC: 10 ug/mL, IF: 10 ug/mL |
| Reactivity: | Human |
| Host: | Rabbit |
| Isotype: | IgG |
| Clonality: | Polyclonal |
| Immunogen: | DOK1 antibody was raised against a peptide corresponding to amino acids near the carboxy terminus of human DOK1. |
| Formulation: | PBS containing 0.02% sodium azide. |
| Concentration: | 1ug/ul |
| Purification: | Affinity chromatography purified via peptide column |
| Conjugation: | Unconjugated |
| Storage: | Store at -20°C as received. |
| Stability: | Stable for 12 months from date of receipt. |
| Gene Name: | telomerase associated protein 1 |
| Database Link: | AAC51127 Entrez Gene 7011 Human Q99704 |
| Background: | Signals from most growth factors and cytokines are transduced by receptor tyrosine kinases or non-receptor tyrosine kinases. Activated tyrosine kinases phosphorylate their substrates, which mediate the cellular response to extracellular stimuli. A long-sought major substrate termed p62dok (downstream of tyrosine kinase) for many tyrosine kinases including c-kit, v-abl, v-Fps, v-Src, v-Fms, and activated EGF, PDGF, IGF, VEGF and insulin receptors was identified recently from human and mouse by several laboratories. Upon phosphorylation, p62dok forms a complex with the ras GTPase-activating protein (RasGAP). p62dok represents a new family with very recently identified p56dok. |
| Synonyms: | P62DOK |

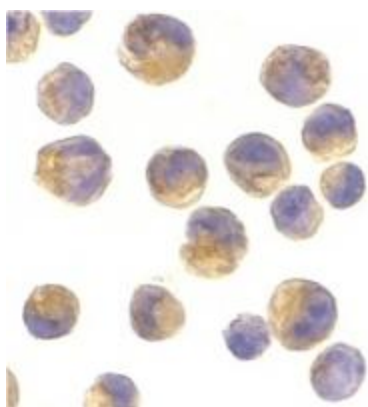


[View online »](#)

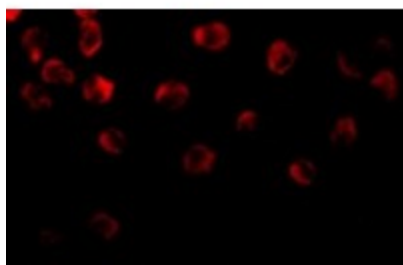
Product images:



Western blot analysis of DOK1 in Jurkat (Jur) and THP-1 (THP) cell lysates with DOK1 antibody at 1 ug/mL.



Immunocytochemistry of DOK1 in K562 cells with DOK1 antibody at 2 ug/mL.



Immunofluorescence of DOK1 in K562 cells with DOK1 antibody at 10 ug/mL.