

Product datasheet for **TA305938**

CCR3 Rabbit Polyclonal Antibody

Product data:

Product Type:	Primary Antibodies
Applications:	IF, IHC, WB
Recommended Dilution:	WB: 1 - 2 ug/mL, IHC: 10 ug/mL, IHC: 20 ug/mL
Reactivity:	Human, Mouse, Rat
Host:	Rabbit
Isotype:	IgG
Clonality:	Polyclonal
Immunogen:	CCR3 antibody was raised against a 14 amino acid peptide from near the carboxy terminus of human CCR3.
Formulation:	PBS containing 0.02% sodium azide.
Concentration:	1ug/ul
Purification:	Immunoaffinity purified IgG
Conjugation:	Unconjugated
Storage:	Antibody can be stored at 4°C up to one year. Antibodies should not be exposed to prolonged high temperatures.
Stability:	Stable for 12 months from date of receipt.
Gene Name:	C-C motif chemokine receptor 3
Database Link:	NP_847899 Entrez Gene 1232 Human P51677



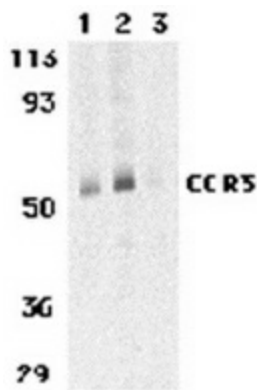
[View online »](#)

Background:

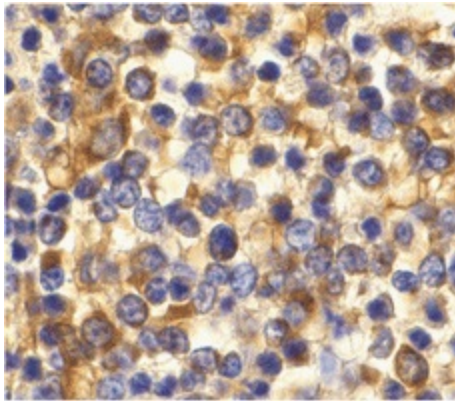
Human immunodeficiency virus (HIV) and related virus require coreceptors to infect target cells. Some G protein-coupled receptors including CCR5, CXCR4, CCR3, CCR2b, CCR8, GPR15, STRL33, and CX3CR1 in the chemokine receptor family were recently identified as HIV coreceptors. CCR5, CXCR4 and CCR3 are the principal receptors for HIV fusion and entry of target cells. CCR3 facilitates infection by a subset of virus. CCR3 and CCR5 promote efficient infection of microglia, the major target cells in the CNS (3,4). High levels of CCR3 and CXCR4 expression were found on the neurons from both the central and peripheral nervous systems. The CCR3 ligand, eotaxin, and an anti-CCR3 antibody inhibited HIV infection of microglia. These results indicate CCR3 plays an important role in HIV infection of CNS.

Synonyms:

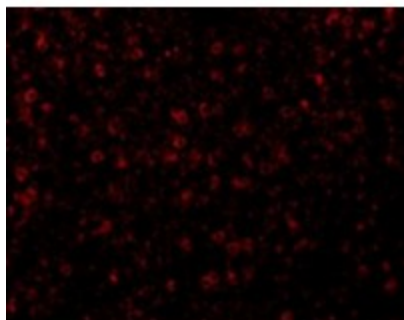
CC-CKR-3; CD193; CKR3; CMKBR3

Product images:

Western blot analysis of CCR3 in human spleen tissue lysates with CCR3 antibody at 1 (lane 1) and 2 ug/ml (lane 2), and 2 ug/ml in the presence of blocking peptide (lane 3).



Immunohistochemistry of CCR3 in human spleen tissue with CCR3 antibody at 10 ug/ml.



Immunofluorescence of CCR3 in Human Spleen tissue with CCR3 antibody at 20 ug/mL.