

Product datasheet for **TA305928**

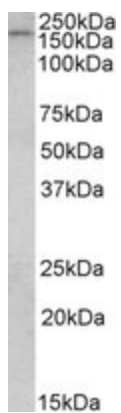
CLIP170 (CLIP1) Goat Polyclonal Antibody

Product data:

Product Type:	Primary Antibodies
Applications:	WB
Recommended Dilution:	WB: 1-3ug/ml.
Reactivity:	Human (Expected from sequence similarity: Mouse, Rat, Dog, Pig)
Host:	Goat
Isotype:	IgG
Clonality:	Polyclonal
Immunogen:	Peptide with sequence C-PHSTHHGSRGEERP, from the C-Terminus of the protein sequence according to NP_002947.1; NP_937883.1.
Formulation:	0.5 mg/ml in Tris saline, 0.02% sodium azide, pH7.3 with 0.5% bovine serum albumin
Concentration:	lot specific
Purification:	Purified from goat serum by ammonium sulphate precipitation followed by antigen affinity chromatography using the immunizing peptide. Supplied at 0.5 mg/ml in Tris saline, 0.02% sodium azide, pH7.3 with 0.5% bovine serum albumin. Aliquot and store at -20C. Minimize freezing and thawing.
Conjugation:	Unconjugated
Storage:	Store at -20°C as received.
Stability:	Stable for 12 months from date of receipt.
Gene Name:	CAP-Gly domain containing linker protein 1
Database Link:	NP_002947 Entrez Gene 56430 MouseEntrez Gene 65201 RatEntrez Gene 477461 DogEntrez Gene 6249 Human P30622
Synonyms:	CLIP; CLIP-170; CLIP170; CYLN1; RSN



[View online »](#)

Product images:

TA305928 (1ug/ml) staining of Human Breast Cancer lysate (35ug protein in RIPA buffer). Primary incubation was 1 hour. Detected by chemiluminescence.