

Product datasheet for **TA305921**

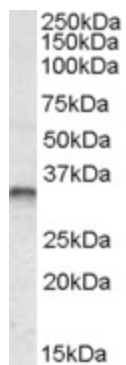
JUNB Goat Polyclonal Antibody

Product data:

Product Type:	Primary Antibodies
Applications:	WB
Recommended Dilution:	WB: 0.3-1ug/ml.
Reactivity:	Human (Expected from sequence similarity: Mouse, Rat, Cow, Dog)
Host:	Goat
Isotype:	IgG
Clonality:	Polyclonal
Immunogen:	Peptide with sequence C-TLKAENAGLSSTAG, from the internal region of the protein sequence according to NP_002220.1.
Formulation:	0.5 mg/ml in Tris saline, 0.02% sodium azide, pH7.3 with 0.5% bovine serum albumin
Concentration:	lot specific
Purification:	Purified from goat serum by ammonium sulphate precipitation followed by antigen affinity chromatography using the immunizing peptide. Supplied at 0.5 mg/ml in Tris saline, 0.02% sodium azide, pH7.3 with 0.5% bovine serum albumin. Aliquot and store at -20C. Minimize freezing and thawing.
Conjugation:	Unconjugated
Storage:	Store at -20°C as received.
Stability:	Stable for 12 months from date of receipt.
Gene Name:	JunB proto-oncogene, AP-1 transcription factor subunit
Database Link:	NP_002220 Entrez Gene 16477 MouseEntrez Gene 24517 RatEntrez Gene 100856456 DogEntrez Gene 3726 Human P17275
Synonyms:	AP-1
Protein Families:	Druggable Genome, Transcription Factors



[View online »](#)

Product images:

TA305921 (0.3ug/ml) staining of Human Breast Cancer lysate (35ug protein in RIPA buffer). Primary incubation was 1 hour. Detected by chemiluminescence.