

Product datasheet for **TA305919**

IL18 Goat Polyclonal Antibody

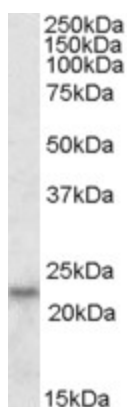
Product data:

Product Type:	Primary Antibodies
Applications:	FC, IF, WB
Recommended Dilution:	Western blot: 1-3µg/ml. 1 h at RT. Approx 23kDa band observed in lysates of cell line HeLa and approx. 21-22kDa band in lysates of cell lines A431 and U2OS (calculated MW of 22.3kDa according to NP_001553.1). Immunofluorescence: 10µg/ml. Strong expression of the protein seen in the golgi and cytoplasm of A431 and U2OS cells. Flow Cytometry: Flow cytometric analysis of A431 cells. Recommended concentration: 10ug/ml.
Reactivity:	Human
Host:	Goat
Isotype:	IgG
Clonality:	Polyclonal
Immunogen:	Peptide with sequence C-NPPDNIKDTKSDI, from the internal region of the protein sequence according to NP_001553.1.
Formulation:	0.5 mg/ml in Tris saline, 0.02% sodium azide, pH7.3 with 0.5% bovine serum albumin
Purification:	Purified from goat serum by ammonium sulphate precipitation followed by antigen affinity chromatography using the immunizing peptide. Supplied at 0.5 mg/ml in Tris saline, 0.02% sodium azide, pH7.3 with 0.5% bovine serum albumin. Aliquot and store at -20C. Minimize freezing and thawing.
Conjugation:	Unconjugated
Storage:	Store at -20°C as received.
Stability:	Stable for 12 months from date of receipt.
Gene Name:	interleukin 18
Database Link:	NP_001553 Entrez Gene 3606 Human Q14116



[View online »](#)

Background:	The protein encoded by this gene is a proinflammatory cytokine. This cytokine can induce the IFN-gamma production of T cells. The combination of this cytokine and IL12 has been shown to inhibit IL4 dependent IgE and IgG1 production, and enhance IgG2a production of B cells. IL-18 binding protein (IL18BP) can specifically interact with this cytokine, and thus negatively regulate its biological activity. [provided by RefSeq]
Synonyms:	IGIF; IL-1g; IL-18; IL1F4
Protein Families:	Druggable Genome, Secreted Protein
Protein Pathways:	Cytokine-cytokine receptor interaction, Cytosolic DNA-sensing pathway, NOD-like receptor signaling pathway

Product images:

TA305919 (0.1ug/ml) staining of HeLa lysate (35ug protein in RIPA buffer). Primary incubation was 1 hour. Detected by chemiluminescence.