

## Product datasheet for **TA305917**

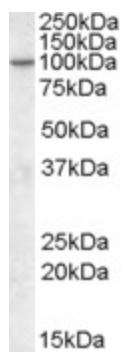
### Centaurin gamma 1 (AGAP2) Goat Polyclonal Antibody

#### Product data:

Product Type:	Primary Antibodies
Applications:	WB
Recommended Dilution:	WB: 0.3-1ug/ml.
Reactivity:	Human
Host:	Goat
Isotype:	IgG
Clonality:	Polyclonal
Immunogen:	Peptide with sequence C-QASLDSIREAVINSQ, from the internal region of the protein sequence according to NP_055585.1.
Formulation:	0.5 mg/ml in Tris saline, 0.02% sodium azide, pH7.3 with 0.5% bovine serum albumin
Concentration:	lot specific
Purification:	Purified from goat serum by ammonium sulphate precipitation followed by antigen affinity chromatography using the immunizing peptide. Supplied at 0.5 mg/ml in Tris saline, 0.02% sodium azide, pH7.3 with 0.5% bovine serum albumin. Aliquot and store at -20C. Minimize freezing and thawing.
Conjugation:	Unconjugated
Storage:	Store at -20°C as received.
Stability:	Stable for 12 months from date of receipt.
Gene Name:	ArfGAP with GTPase domain, ankyrin repeat and PH domain 2
Database Link:	<a href="#">NP_001116244</a> <a href="#">Entrez Gene 116986 Human</a> <a href="#">Q99490</a>
Synonyms:	CENTG1; GGAP2; PIKE
Protein Pathways:	Endocytosis



[View online »](#)

**Product images:**

TA305917 (0.3ug/ml) staining of Human Amygdala lysate (35ug protein in RIPA buffer). Primary incubation was 1 hour. Detected by chemiluminescence.