

Product datasheet for **TA305913**

LIMPII (SCARB2) Goat Polyclonal Antibody

Product data:

Product Type:	Primary Antibodies
Applications:	WB
Recommended Dilution:	WB: 0.1-0.3ug/ml.
Reactivity:	Human (Expected from sequence similarity: Mouse)
Host:	Goat
Isotype:	IgG
Clonality:	Polyclonal
Immunogen:	Peptide with sequence C-NKANIQFGDNGTTIS, from the internal region of the protein sequence according to NP_005497.1.
Formulation:	0.5 mg/ml in Tris saline, 0.02% sodium azide, pH7.3 with 0.5% bovine serum albumin
Concentration:	lot specific
Purification:	Purified from goat serum by ammonium sulphate precipitation followed by antigen affinity chromatography using the immunizing peptide. Supplied at 0.5 mg/ml in Tris saline, 0.02% sodium azide, pH7.3 with 0.5% bovine serum albumin. Aliquot and store at -20C. Minimize freezing and thawing.
Conjugation:	Unconjugated
Storage:	Store at -20°C as received.
Stability:	Stable for 12 months from date of receipt.
Gene Name:	scavenger receptor class B member 2
Database Link:	NP_005497 Entrez Gene 12492 Mouse Entrez Gene 950 Human Q14108
Background:	The protein encoded by this gene is a type III glycoprotein that is located primarily in limiting membranes of lysosomes and endosomes. Studies of the similar protein in mice and rat suggested that this protein may participate in membrane transportation and the reorganization of endosomal/lysosomal compartment. Deficiency of the similar protein in mice was reported to impair cell membrane transport processes and cause pelvic junction obstruction, deafness, and peripheral neuropathy.



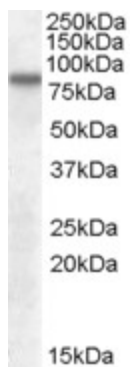
[View online »](#)

Synonyms: AMRF; CD36L2; EPM4; HLGP85; LGP85; LIMP-2; LIMPII; SR-BII

Protein Families: Druggable Genome, Transmembrane

Protein Pathways: Lysosome

Product images:



TA305913 (0.1ug/ml) staining of Human Cerebral Cortex lysate (35ug protein in RIPA buffer). Primary incubation was 1 hour. Detected by chemiluminescence.