

## Product datasheet for **TA305910**

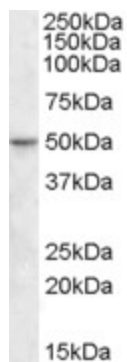
### TEA domain family member 2 (TEAD2) Goat Polyclonal Antibody

#### Product data:

Product Type:	Primary Antibodies
Applications:	WB
Recommended Dilution:	WB: 1-3ug/ml.
Reactivity:	Human (Expected from sequence similarity: Mouse, Rat, Dog, Cow)
Host:	Goat
Isotype:	IgG
Clonality:	Polyclonal
Immunogen:	Peptide with sequence C-EPPDAVDSYQRH, from the internal region of the protein sequence according to NP_003589.1.
Formulation:	0.5 mg/ml in Tris saline, 0.02% sodium azide, pH7.3 with 0.5% bovine serum albumin
Concentration:	lot specific
Purification:	Purified from goat serum by ammonium sulphate precipitation followed by antigen affinity chromatography using the immunizing peptide. Supplied at 0.5 mg/ml in Tris saline, 0.02% sodium azide, pH7.3 with 0.5% bovine serum albumin. Aliquot and store at -20C. Minimize freezing and thawing.
Conjugation:	Unconjugated
Storage:	Store at -20°C as received.
Stability:	Stable for 12 months from date of receipt.
Gene Name:	TEA domain transcription factor 2
Database Link:	<a href="#">NP_003589</a> <a href="#">Entrez Gene 21677 Mouse</a> <a href="#">Entrez Gene 308582 Rat</a> <a href="#">Entrez Gene 484381 Dog</a> <a href="#">Entrez Gene 8463 Human</a> <a href="#">Q15562</a>
Synonyms:	ETF; TEAD-2; TEF-4; TEF4
Protein Families:	Transcription Factors



[View online »](#)

**Product images:**

TA305910 (1ug/ml) staining of Human Ileum lysate (35ug protein in RIPA buffer). Primary incubation was 1 hour. Detected by chemiluminescence.