

Product datasheet for **TA305909**

CDK10 Goat Polyclonal Antibody

Product data:

| | |
|-----------------------|---|
| Product Type: | Primary Antibodies |
| Applications: | WB |
| Recommended Dilution: | WB: 0.5-2ug/ml. |
| Reactivity: | Human |
| Host: | Goat |
| Isotype: | IgG |
| Clonality: | Polyclonal |
| Immunogen: | Peptide with sequence AEPDLECEQIRLK, from the N Terminus of the protein sequence according to NP_443714.3. |
| Formulation: | 0.5 mg/ml in Tris saline, 0.02% sodium azide, pH7.3 with 0.5% bovine serum albumin |
| Concentration: | lot specific |
| Purification: | Purified from goat serum by ammonium sulphate precipitation followed by antigen affinity chromatography using the immunizing peptide. Supplied at 0.5 mg/ml in Tris saline, 0.02% sodium azide, pH7.3 with 0.5% bovine serum albumin. Aliquot and store at -20C. Minimize freezing and thawing. |
| Conjugation: | Unconjugated |
| Storage: | Store at -20°C as received. |
| Stability: | Stable for 12 months from date of receipt. |
| Gene Name: | cyclin-dependent kinase 10 |
| Database Link: | NP_001092003 Entrez Gene 8558 Human Q15131 |



[View online »](#)

Background:

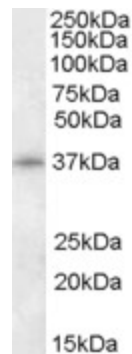
The protein encoded by this gene belongs to the CDK subfamily of the Ser/Thr protein kinase family. The CDK subfamily members are highly similar to the gene products of *S. cerevisiae* cdc28, and *S. pombe* cdc2, and are known to be essential for cell cycle progression. This kinase has been shown to play a role in cellular proliferation and its function is limited to cell cycle G2-M phase. Several alternatively spliced transcripts encoding different isoforms, some of which use non-AUG (CUG) translation initiation codon, have been found for this gene. [provided by RefSeq]

Synonyms:

PISSLRE

Protein Families:

Druggable Genome, Protein Kinase

Product images:

TA305909 (0.5ug/ml) staining of HepG2 lysate (35ug protein in RIPA buffer). Primary incubation was 1 hour. Detected by chemiluminescence.